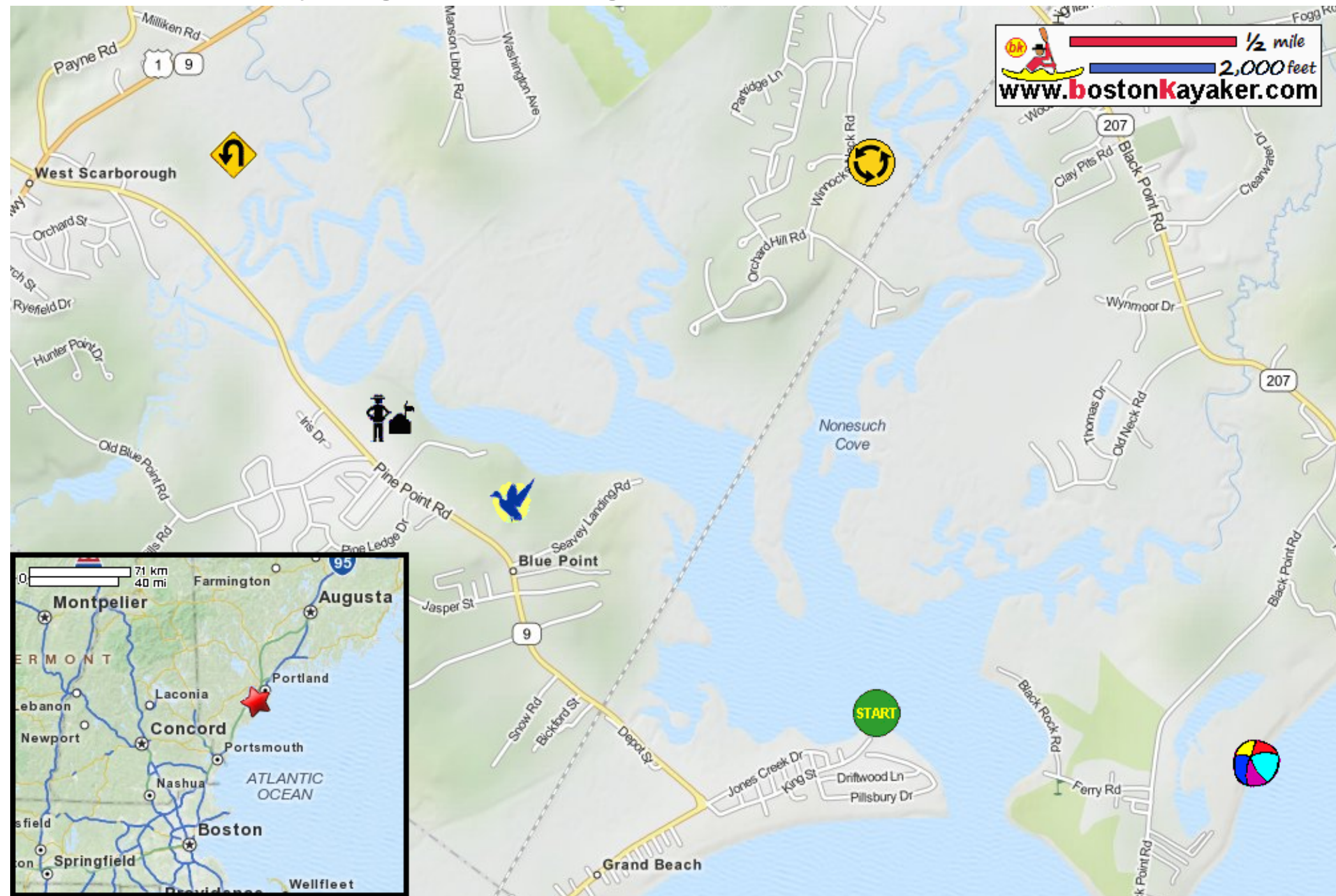










Kayaking on Scarborough River and Marsh - in Scarborough ME

1/2 mile
2,000 feet
www.bostonkayaker.com



-  Put in at King Street in Scarborough ME.
-  Paddle upriver and return.
-  Alternate destination to Nonesuch River.
-  Scarborough River Wildlife Sanctuary
-  Estimated round trip distance = 8+- miles
-  Best to start when tide is rising and return when tide is receding.
-  Scarborough Marsh Audubon Center Alternate put in spot.
-  Scarborough Beach State Park