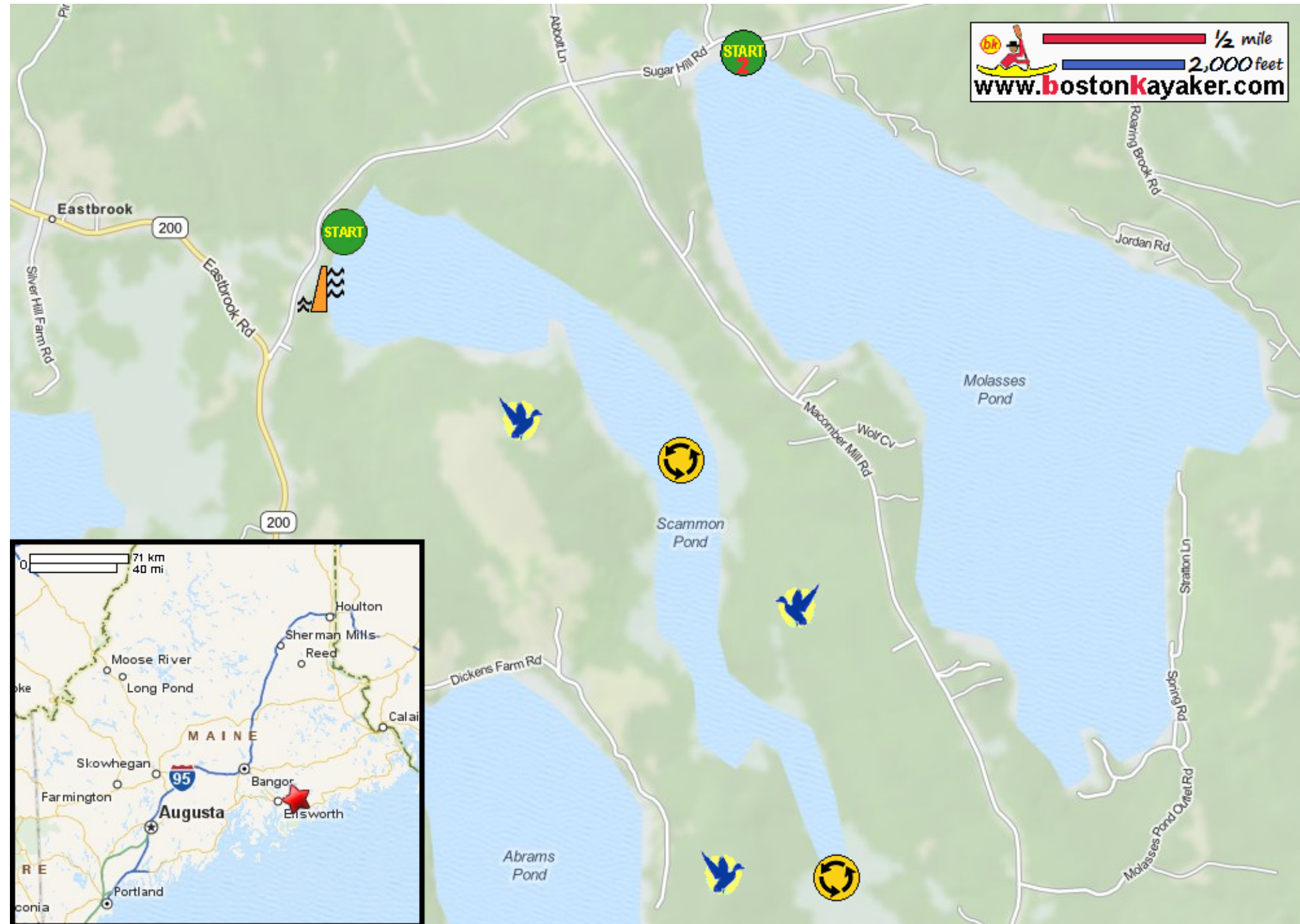


Kayaking on Scammon Pond and Molasses Pond - in Franklin ME

www.bostonkayaker.com



- Put in at Sugar Hill Road in Franklin ME.
- Paddle around pond and return.
- Estimated round trip distance = 4.5+ miles
- Scammon Pond Dam
- Lyle Frost Wildlife Area
- Put in at Sugar Hill Road for a trip around Molasses Pond.