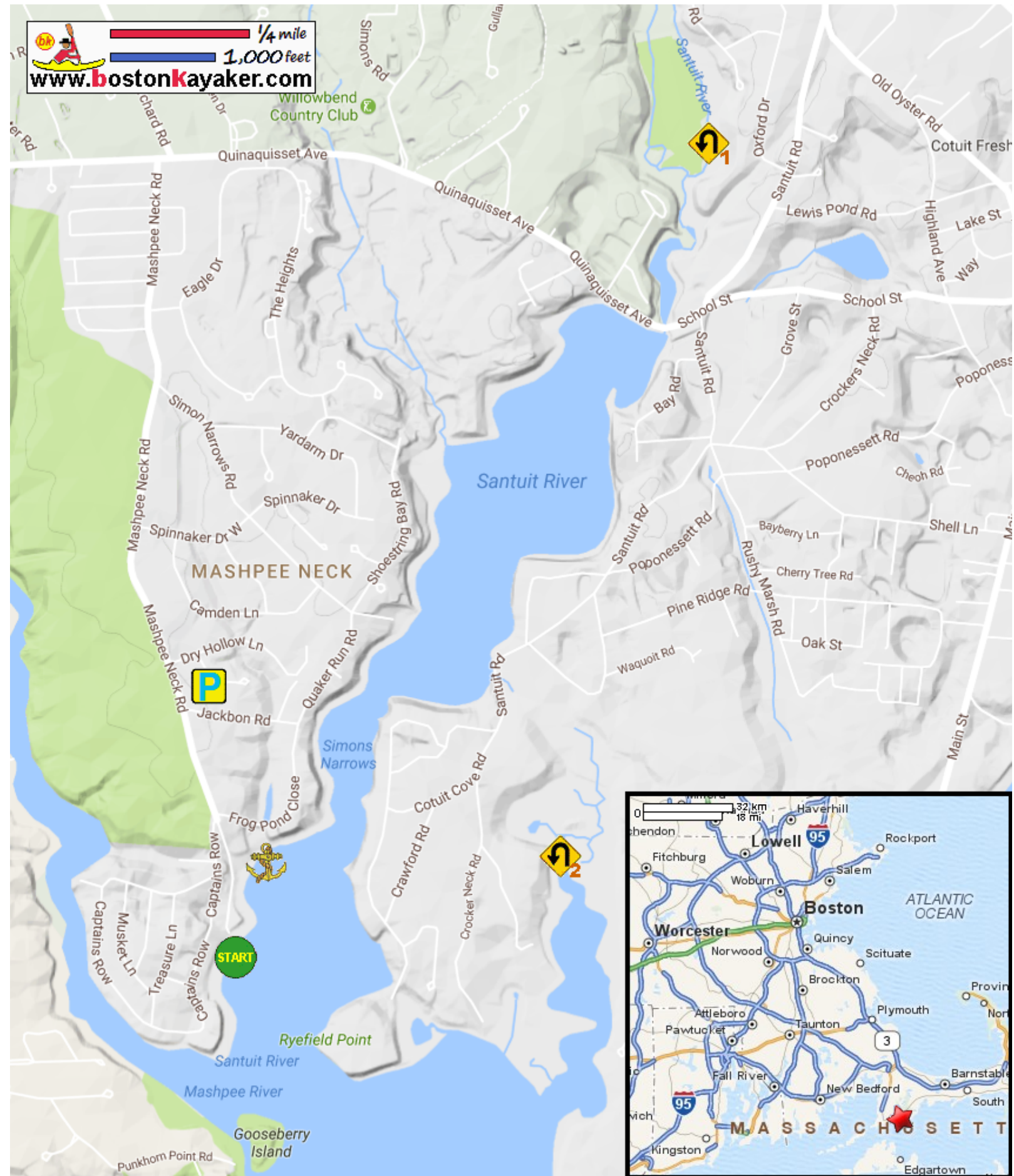


# Kayaking on Santuit River and Pinquisset Cove - in Mashpee MA


 1/4 mile  
 1,000 feet  
[www.bostonkayaker.com](http://www.bostonkayaker.com)



-  Put in at Mashpee Neck Road town launch in Mashpee MA.
-  Launch parking for residents only. Park up the road.
-  Paddle up on Santuit River and return.
-  Mashpee Neck Marina
-  Paddle east into Pinquisset Cove and return.
-  Best to start paddle 1 hour+ before high tide.
-  Estimated round trip distance = 5+ miles