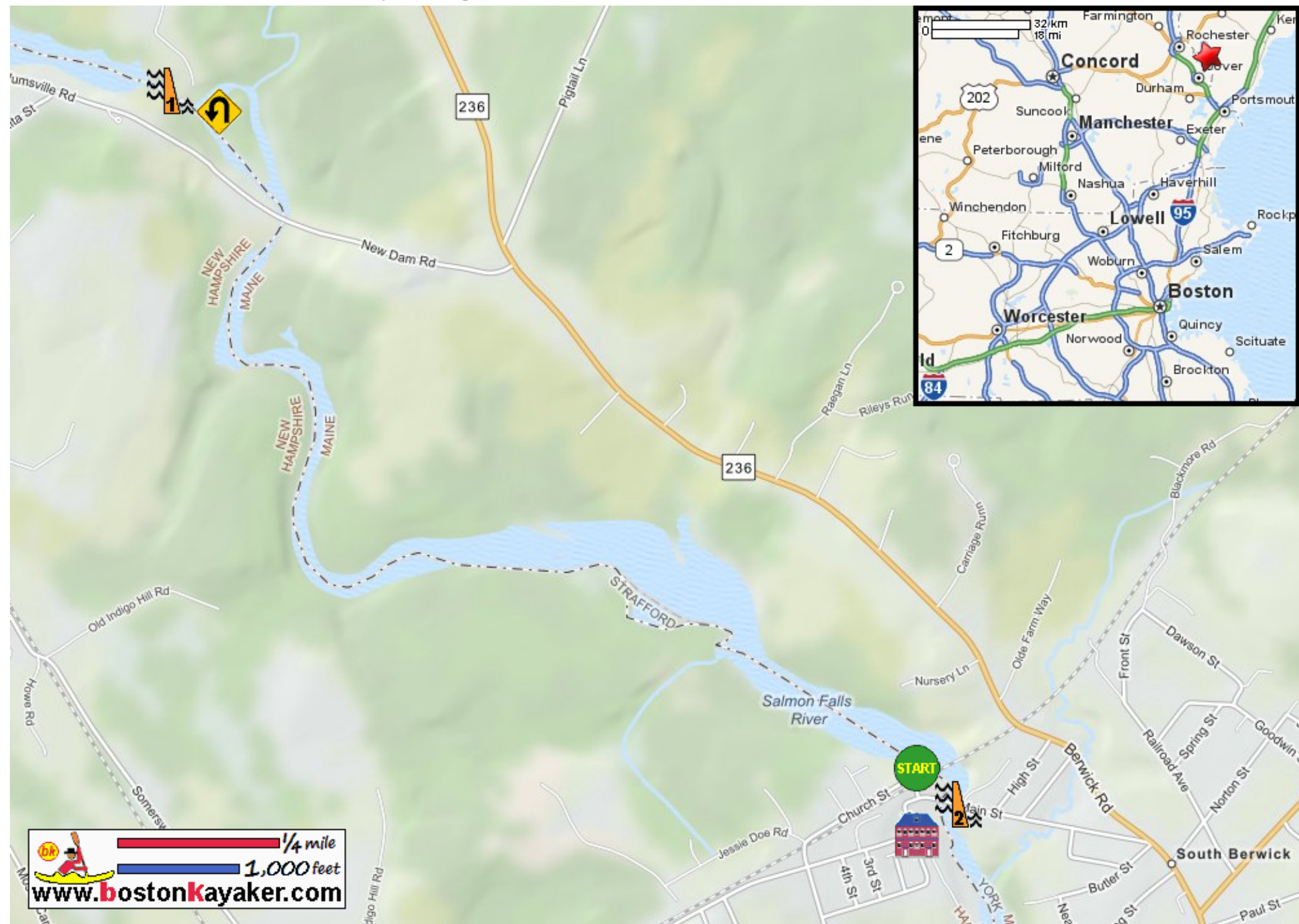


Kayaking on Salmon Falls River - in Rollinsford NH



Put in at Bicentennial Park ramp on Scoutland Road in Rollinsford NH.



Paddle left upriver on Salmon Falls and return.



Estimated round trip distance = 3.5+ miles



New Dam



Rollinsford Dam



Salmon Falls Mill Historic District