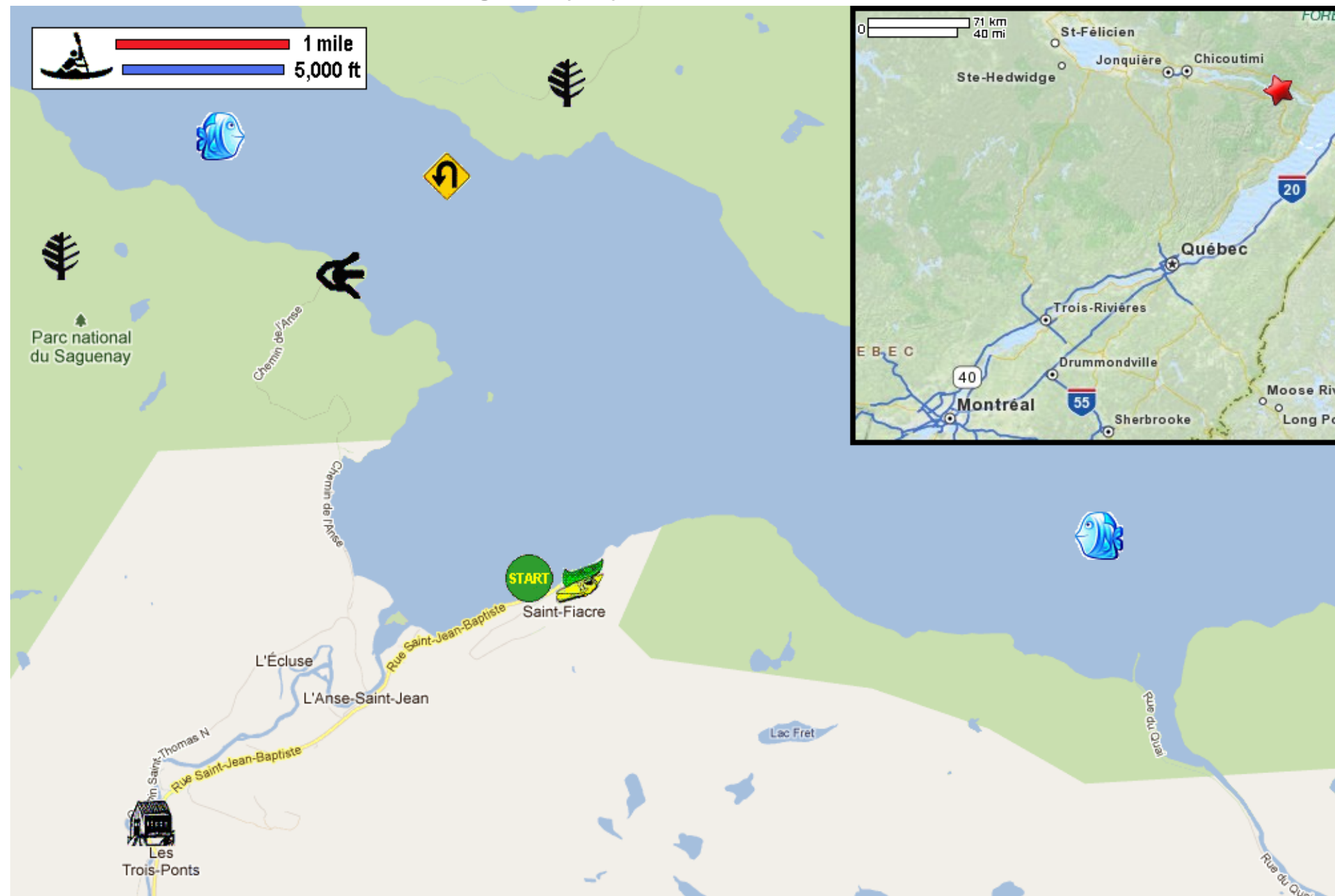






On Saguenay Fjord - in L'Anse-Saint-Jean, Québec




 Put in at the pier of L'Anse-Saint-Jean, Québec. Paddle to the other side of the cove.


 Continue hugging the south bank, then to the middle of the fjord. Return via same route.


 Estimated round trip distance = 5 miles

 L'Anse de Tabatière lookout

 Parc national du Fjord-du-Saguenay (Saguenay Fjord National Park)

 Saguenay-Saint Lawrence Marine Park

 Pont du Faubourg Covered Bridge

 Fjord en Kayak guided kayak tours