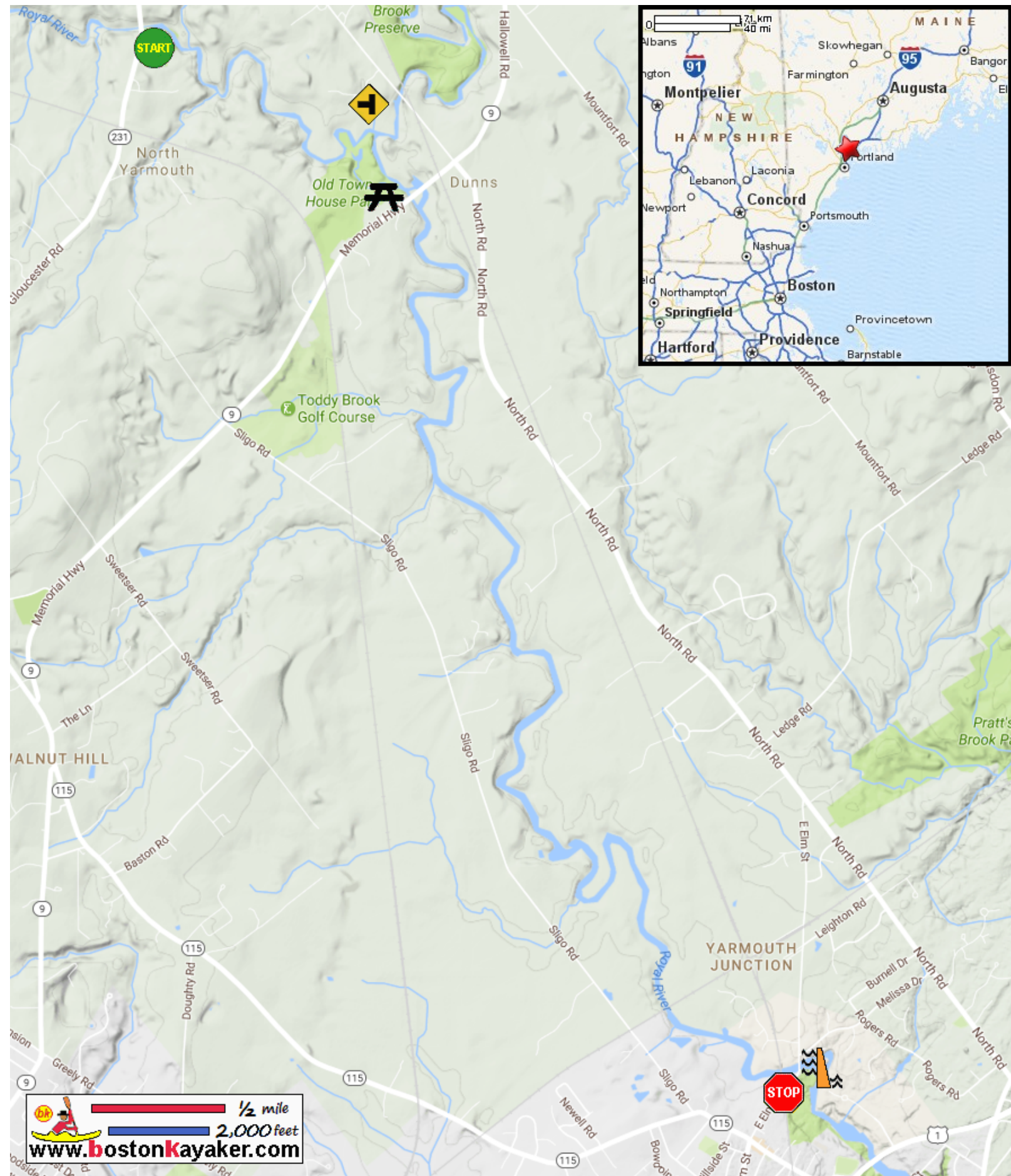


# Kayaking on Royal River - from North Yarmouth ME to Yarmouth ME



[www.bostonkayaker.com](http://www.bostonkayaker.com)

- Put in at Wescustogo Park on Route 231 in North Yarmouth ME.
- Chandler Brook enters on river left. Veer right.
- Take out at East Elm Street in Yarmouth ME.
- Old Town House Park - alternate put in
- Estimated distance = 6.5 miles
- East Elm Street Dam