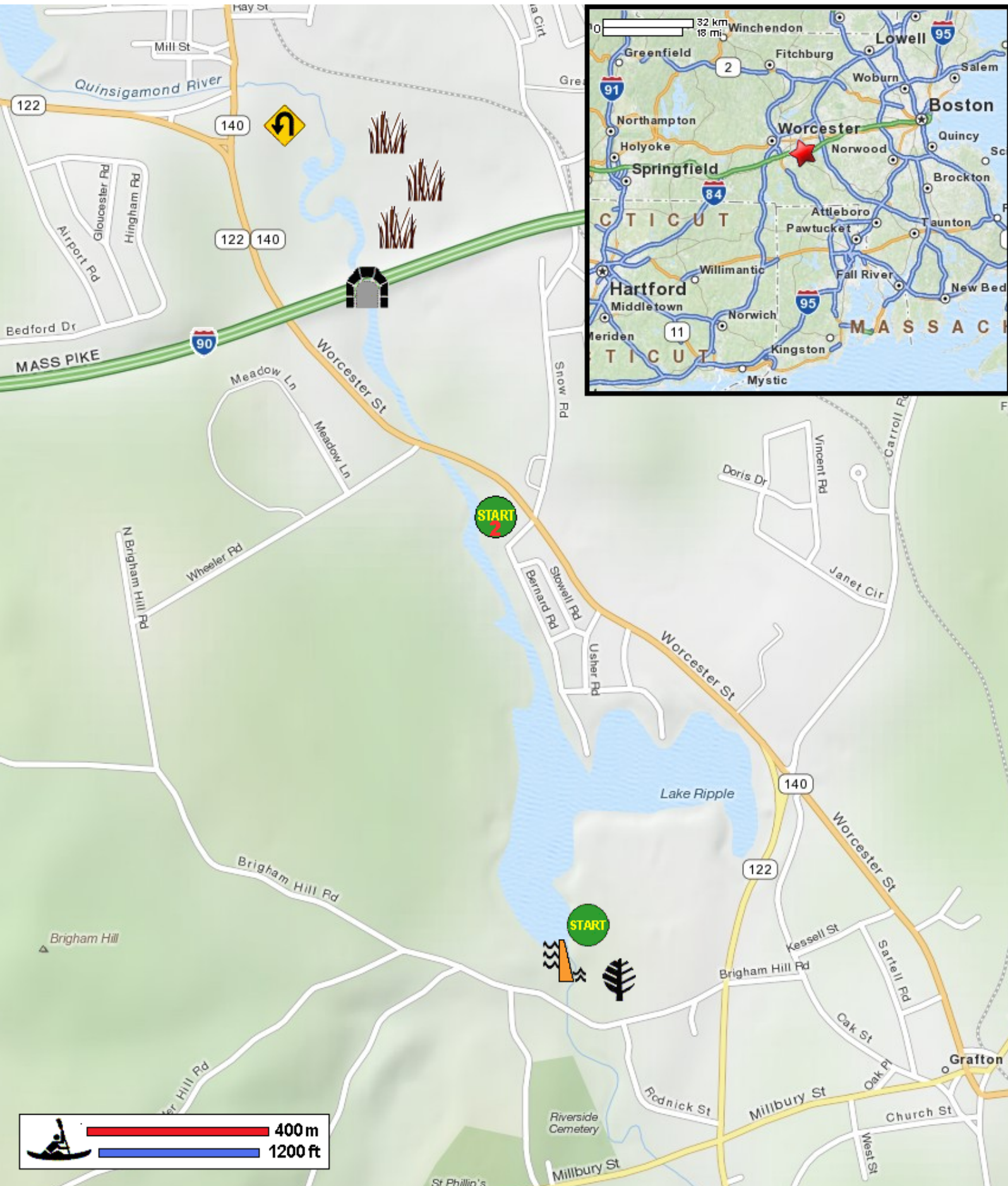










Kayaking on Quinsigamond River and Lake Ripple - in Grafton MA



-  Put in near dam off Brigham Hill Road in Grafton MA.
-  Alternate put in at Ekblaw Landing.
-  Paddle north upriver and return.
-  Lake Ripple Conservation Area
-  Estimated round trip distance = 4 miles
-  Tunnel under I-90
-  Lake Ripple Dam
-  Snow Marsh