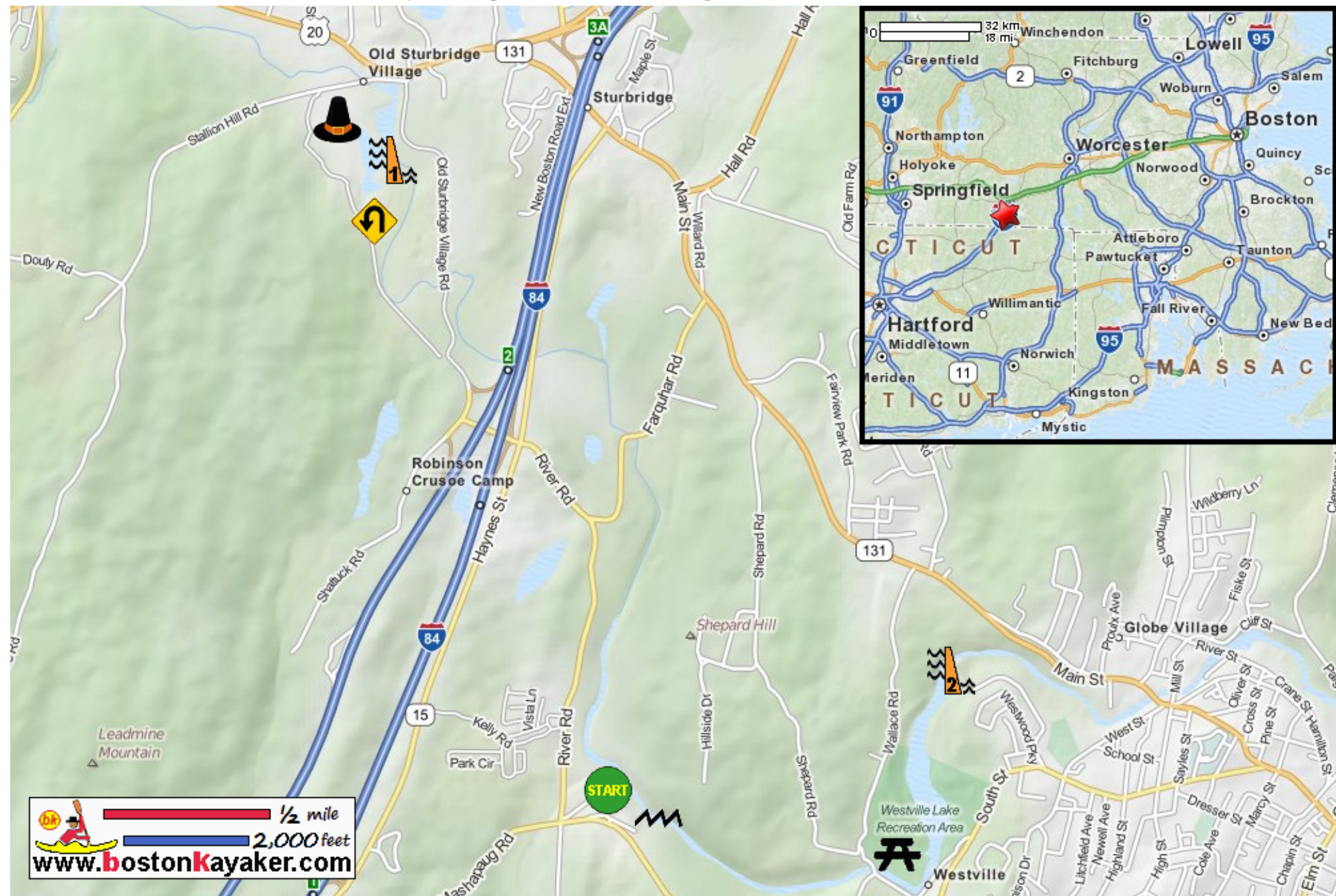











Kayaking on Quinebaug River - in Sturbridge MA



  1/2 mile
 2,000 feet
www.bostonkayaker.com

-  Put in at Old Mashapaug Road in Sturbridge MA.
-  Paddle upriver to dam and return.
-  Estimated round trip distance = 6+ miles
-  This route runnable when river gauge > 60 csf.
-  Old Sturbridge Village Dam
-  Westville Lake Dam
-  Rocky at low water levels.
-  Old Sturbridge Village
-  Westville Lake Recreation Area