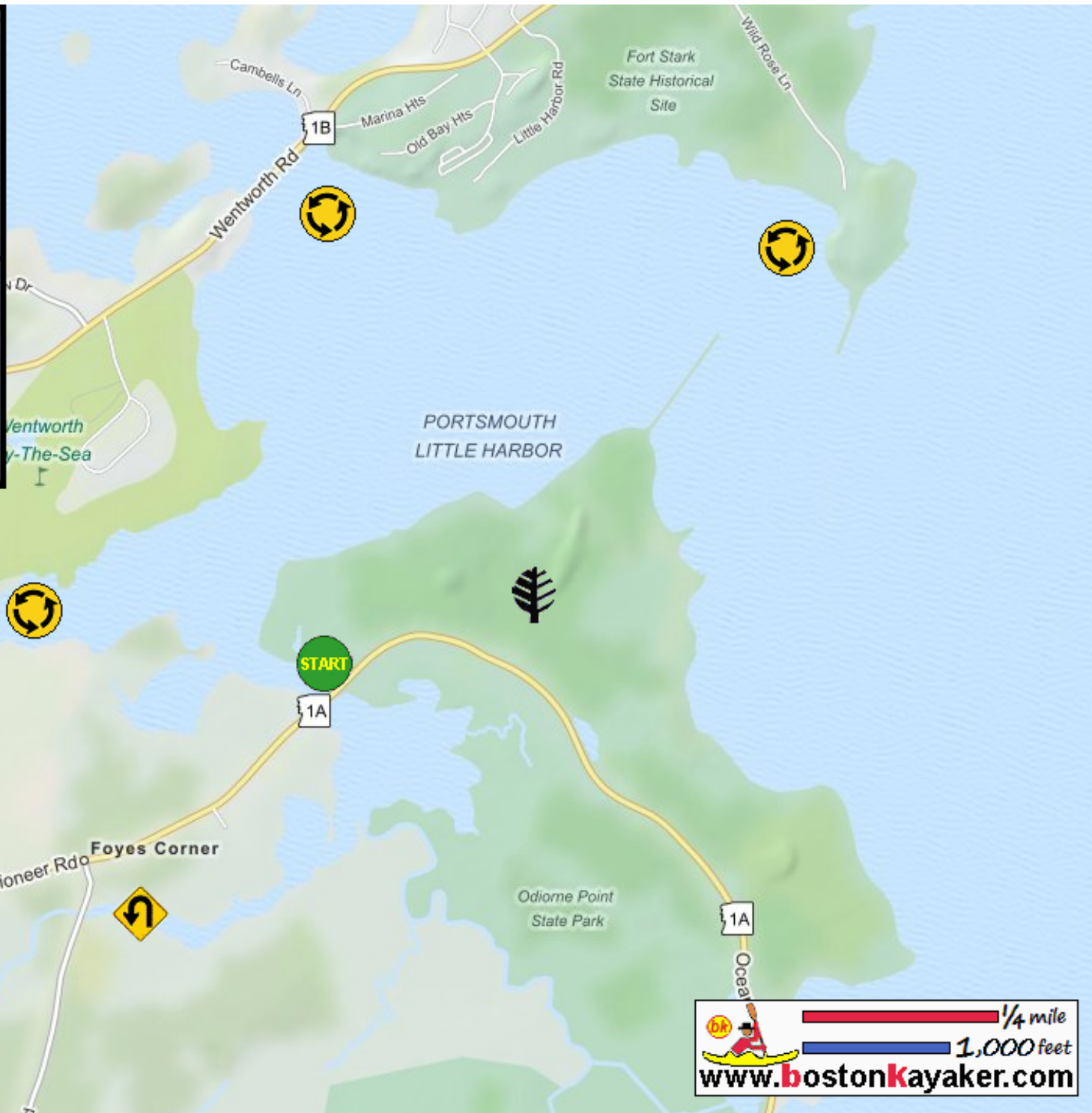








Kayaking on Portsmouth Little Harbor - in Rye NH



-  Put in at park ramp on Route 1A in Rye NH.
-  Paddle around Portsmouth Little Harbor.
-  Paddle into Seavey Creek and return.
-  Estimated round trip distance = 5+ miles
-  Odiome Point State Park
-  Best to start paddle 1 to 2 hours before high tide.