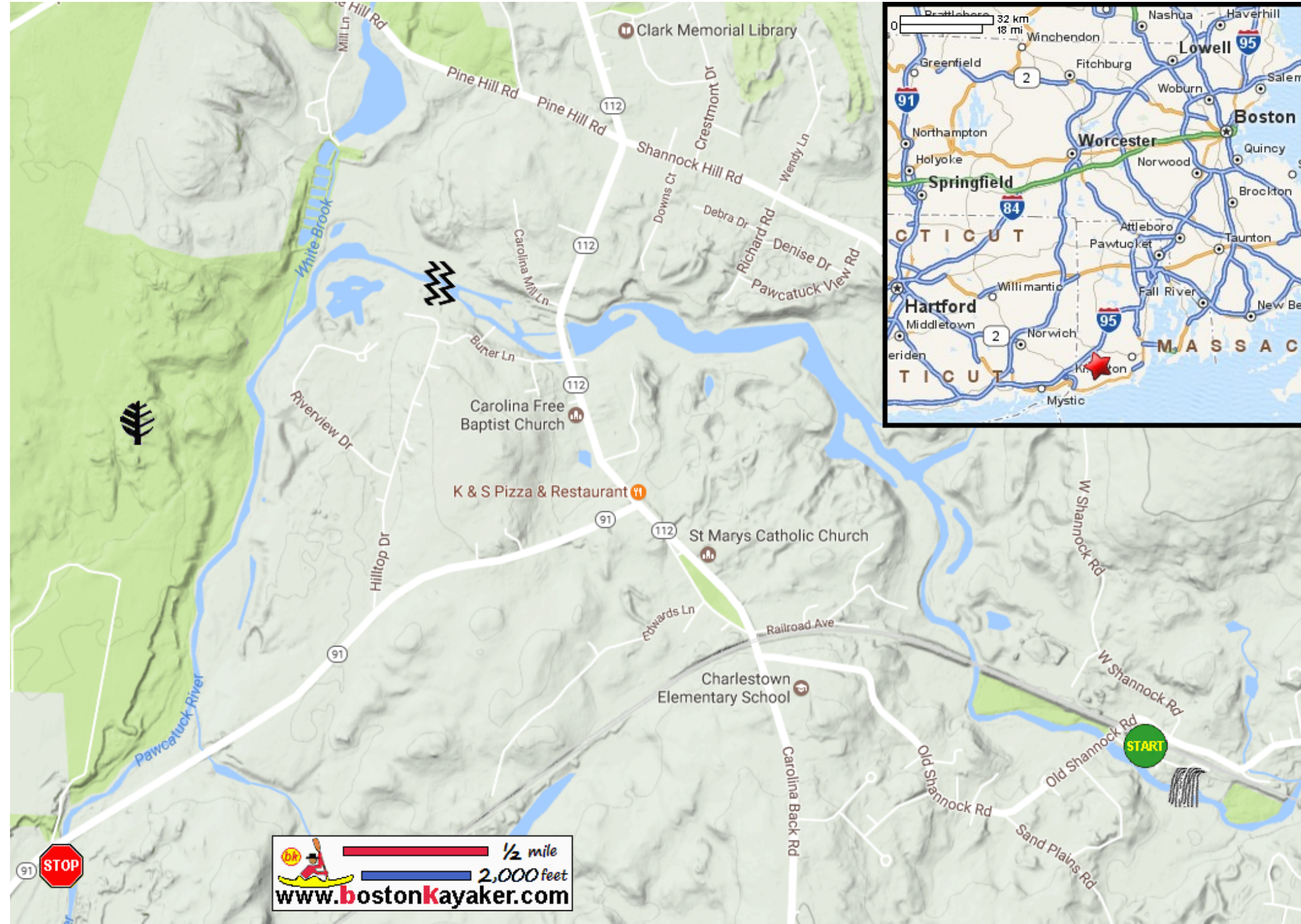
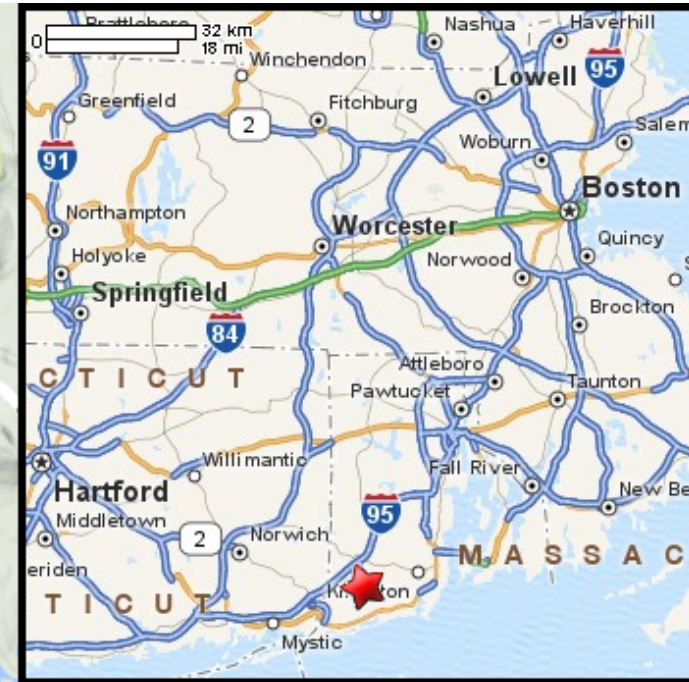


Kayaking on Pawcatuck River - from Charlestown RI to Wood River Junction RI




 1/2 mile
 2,000 feet
www.bostonkayaker.com

-  Put in at Railroad Street in Charlestown RI.
-  Take out at Carolina-Alton Road / Route 91 in Wood River Junction RI.
-  Class I-II rapids.
-  Estimated distance = 3+ miles
-  Shannock Falls
-  Carolina Management Area