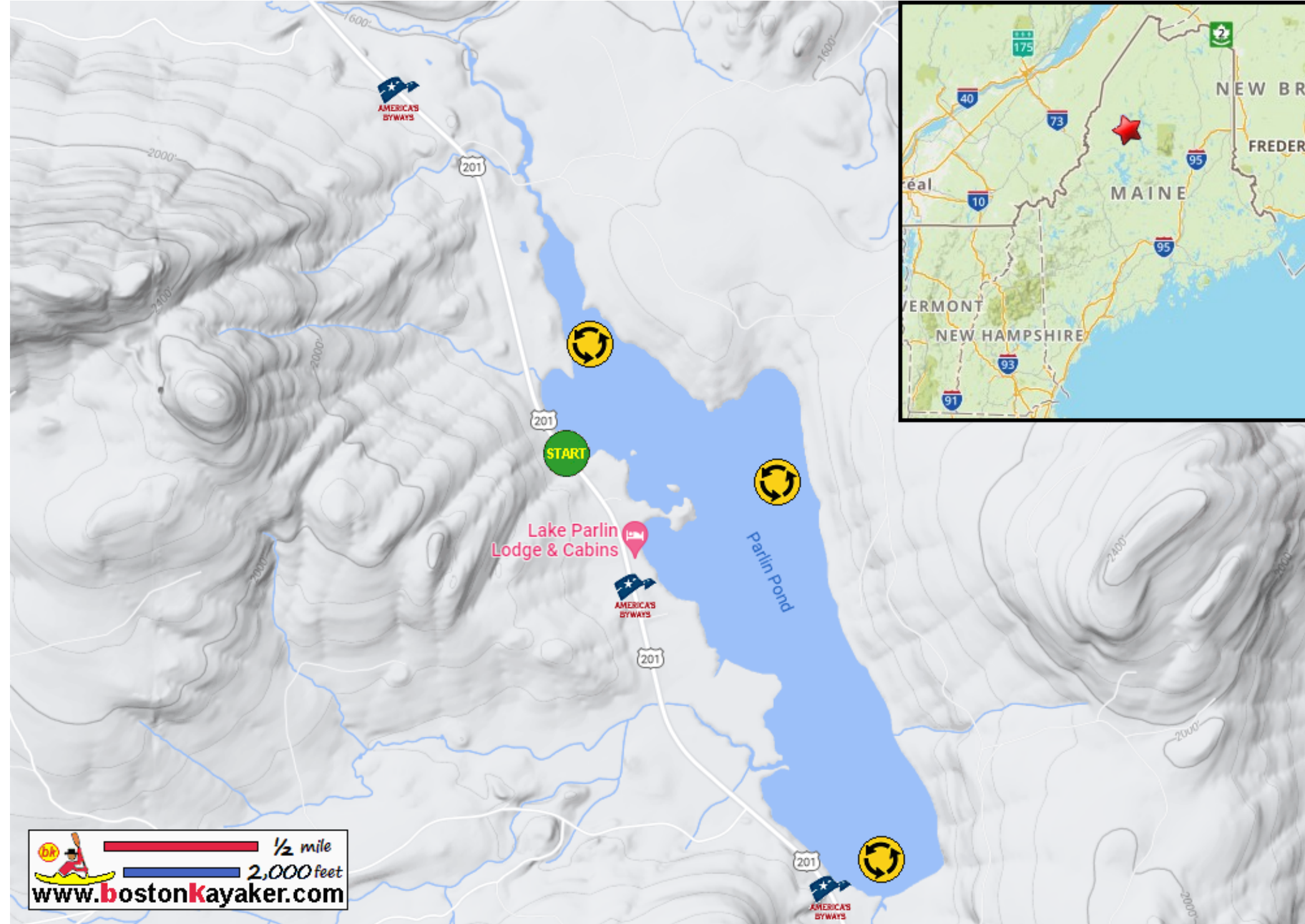


# Kayaking on Parlin Pond - in Jackman ME



  1/2 mile  
 2,000 feet  
[www.bostonkayaker.com](http://www.bostonkayaker.com)



Put in at Route 201 in Jackman ME.



Paddle around Parlin Pond and return.



Estimated round trip distance = 3.5+ miles



Old Canada Road / Route 201 is a designated "National Scenic Byway".