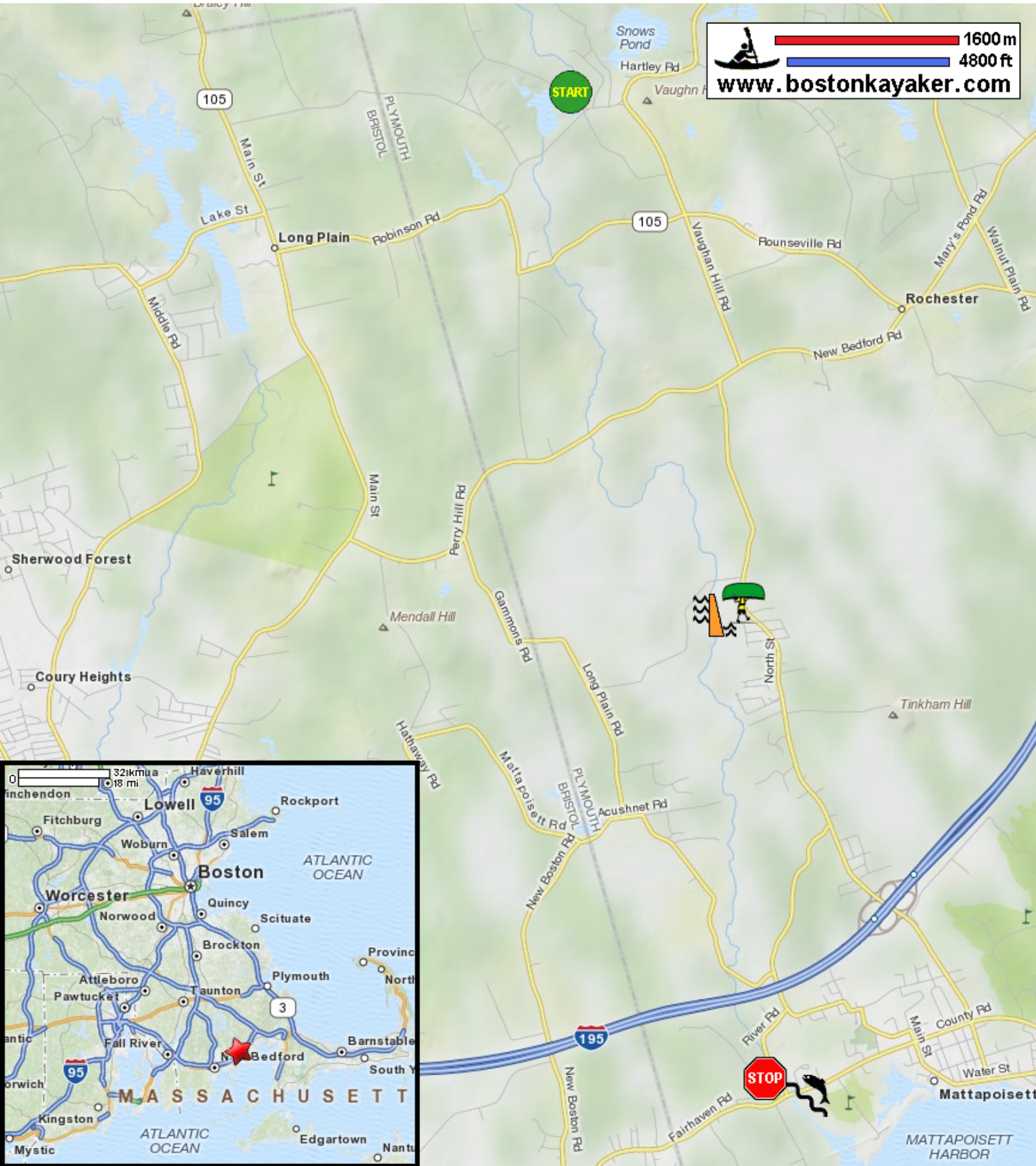


Kayaking on Mattapoissett River - from Rochester MA to Mattapoissett MA

1600 m
4800 ft
www.bostonkayaker.com



Put in at Snipatuit Road in Rochester MA.

Take out at River Road before Route 6 in Mattapoissett MA.

Estimated distance = 10 miles

Portage around dam.

Cranberry bog dam south of Wolf Island Road.

River might be too shallow during summer months.

River name means "land between waters".

Fish Ladder at Route 6

This route is site of annual Memorial Day Boat Race.