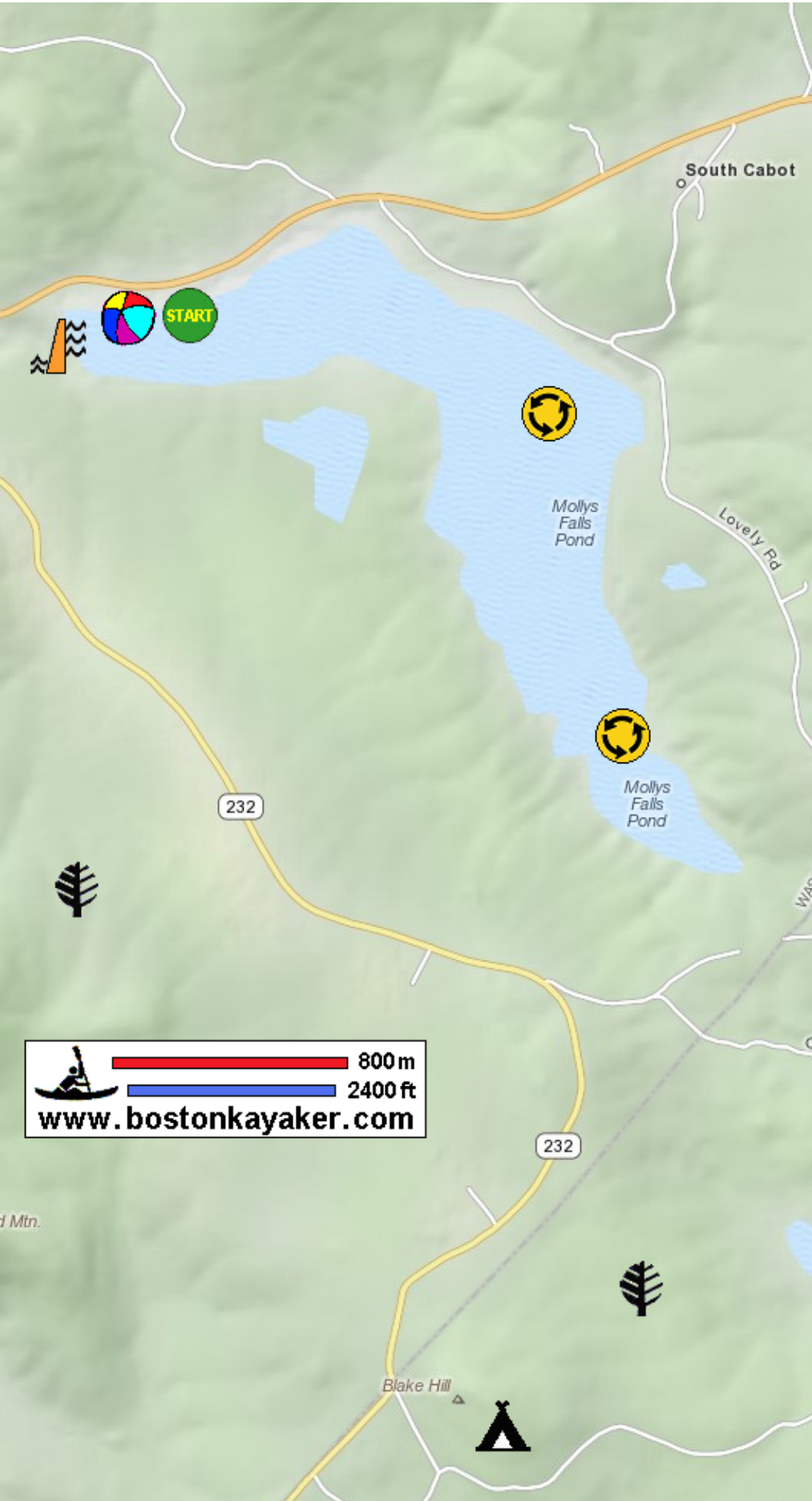










Kayaking on Lake Marshfield - a.k.a. Mollys Falls Pond and Peacham Pond in Marshfield VT




 800m
 2400ft
www.bostonkayaker.com

-  Put in at Theodore Roosevelt Highway / Route 2 in Marshfield VT.
-  Paddle around lake and return.
-  Estimated round trip distance = 4.5 miles
-  Lake Marshfield Dam
-  Optional destination: Peacham Pond. Put in at Spur Road.
-  Public beach
-  New Discovery State Park campgrounds
-  Marshfield Town Forest