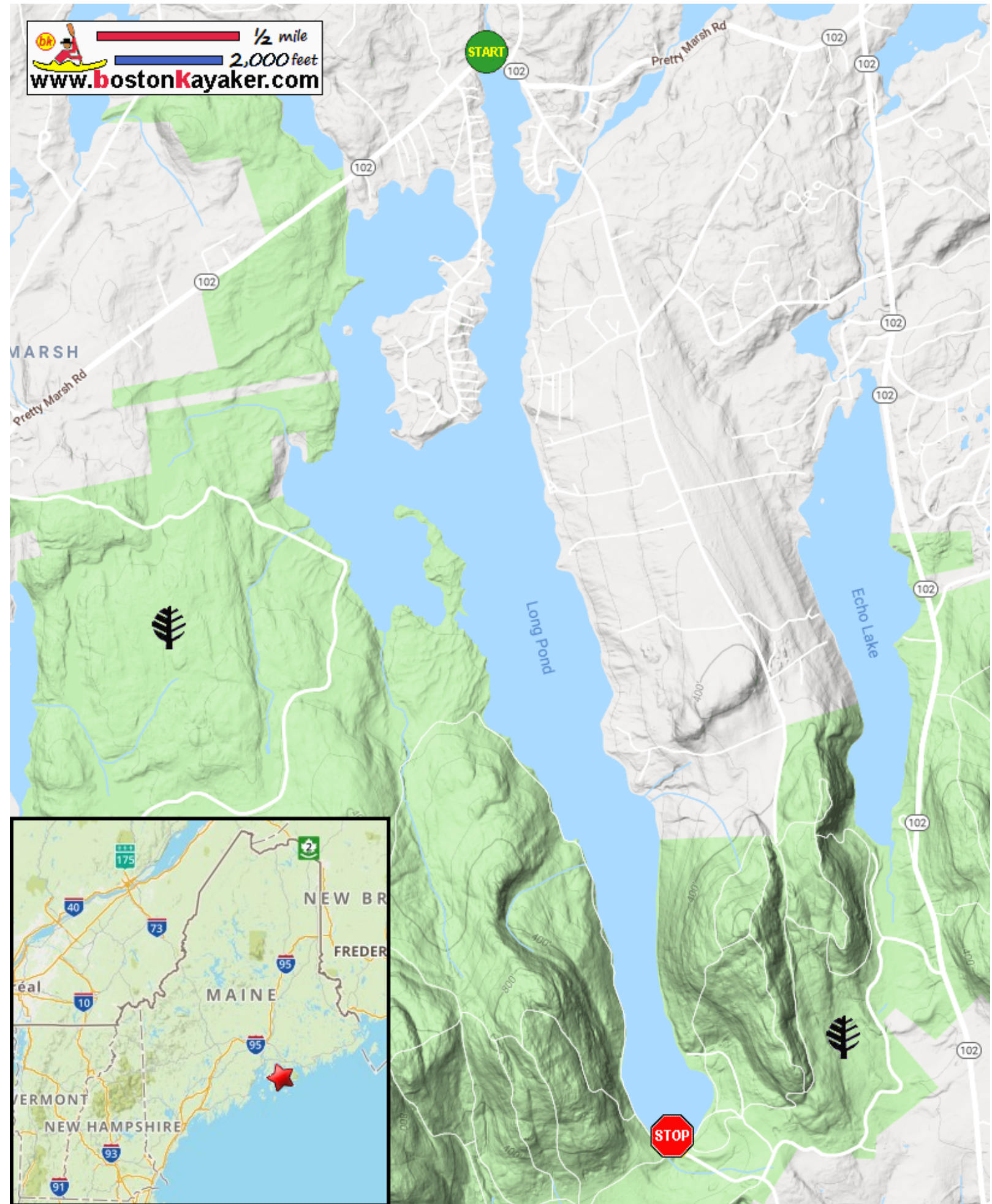





Kayaking on Long Pond - from Mount Desert to Southwest Harbor, ME


  1/2 mile
 2,000 feet
www.bostonkayaker.com



 Put in at Pretty Marshall Road / Route 102 in Mount Desert ME.

 Take out at Long Pond Road in Southwest Harbor ME.

 Estimated distance = 3.7 miles

 Acadia National Park