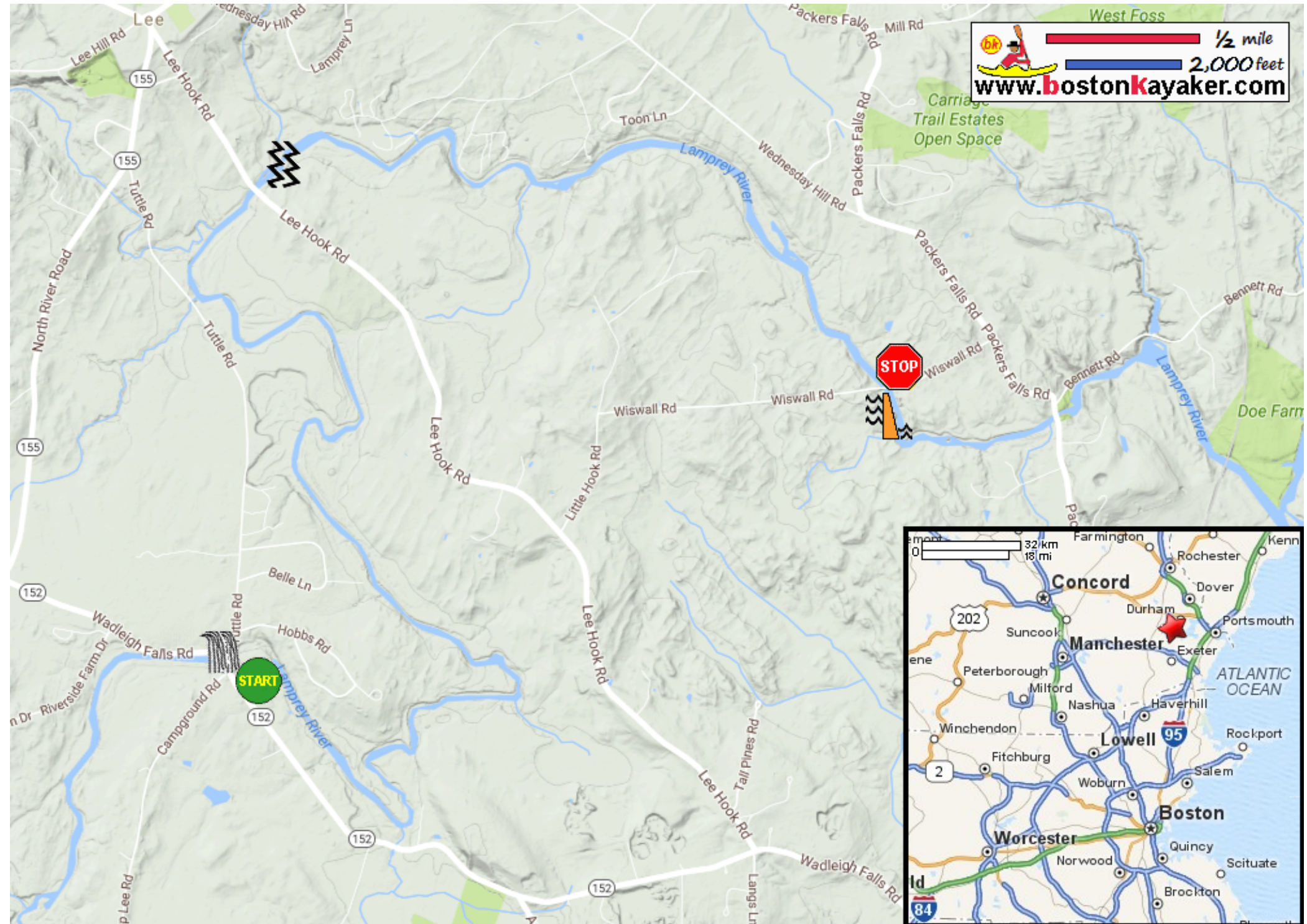


Kayaking on Lamprey River - from Lee NH to Durham NH

www.bostonkayaker.com



- Put in at Wadleigh Falls Road / Route 52 in Lee NH.
- Take out at Wiswall Road in Lee NH.
- Wadleigh Falls
- Class I-II rapids.
- Wiswall Dam
- Water maybe too low from mid-summer.
- Estimated distance = 6 miles