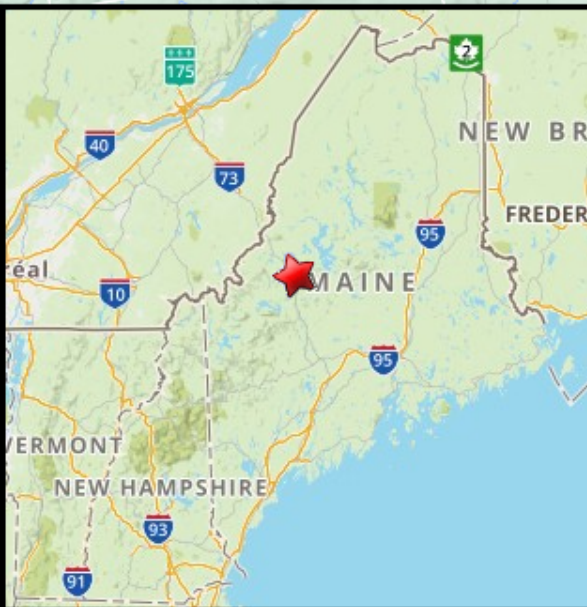
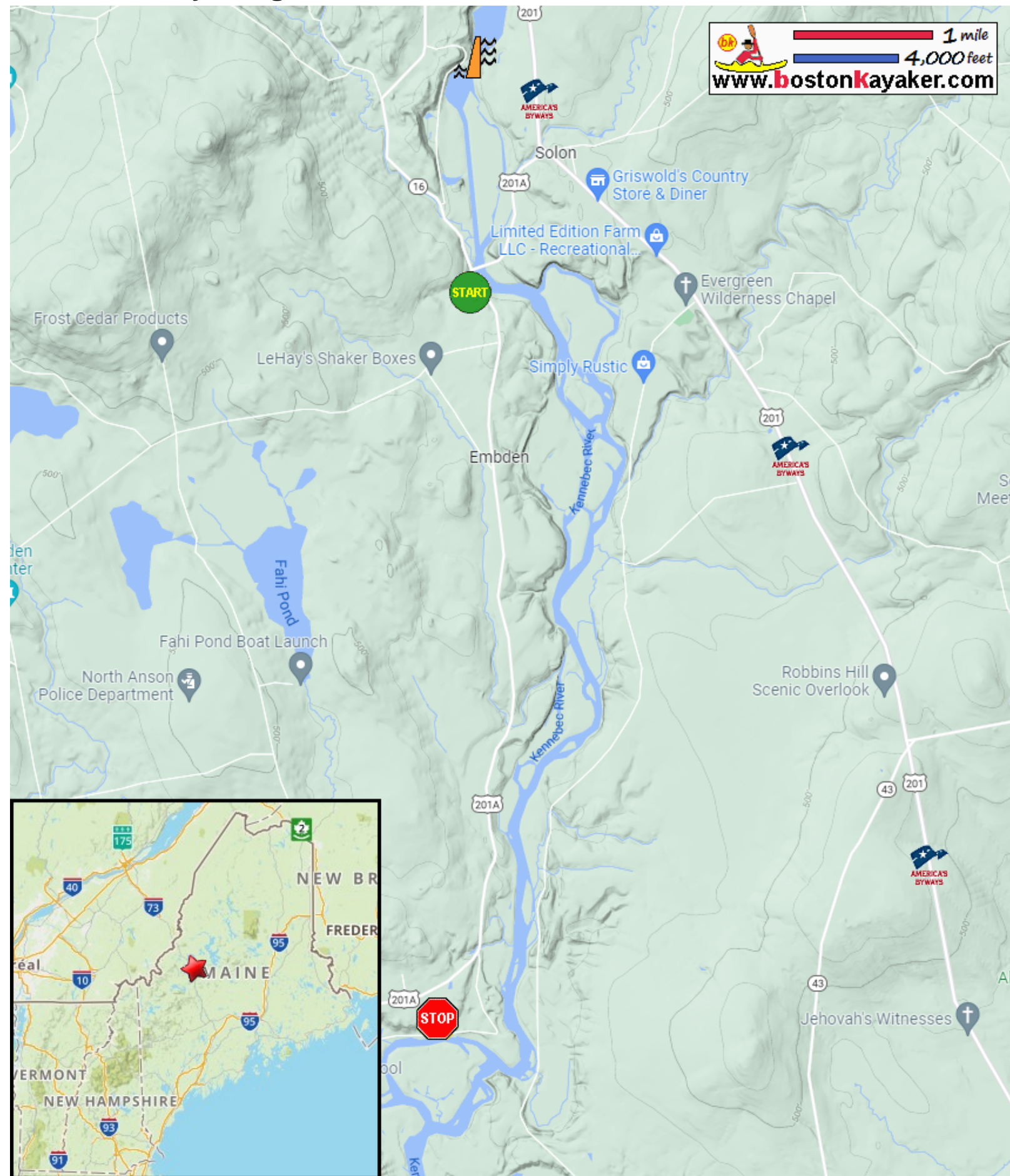





# Kayaking on Kennebec River - from Embden ME to Anson ME



 Put in at Route 16 roadside near Solon bridge in Embden ME.

 Take out at North Anson landing on Madison Avenue in Anson ME.

 Estimated distance = 6.5 miles

 Williams Dam

 Old Canada Road / Route 201 is a designated "National Scenic Byway".