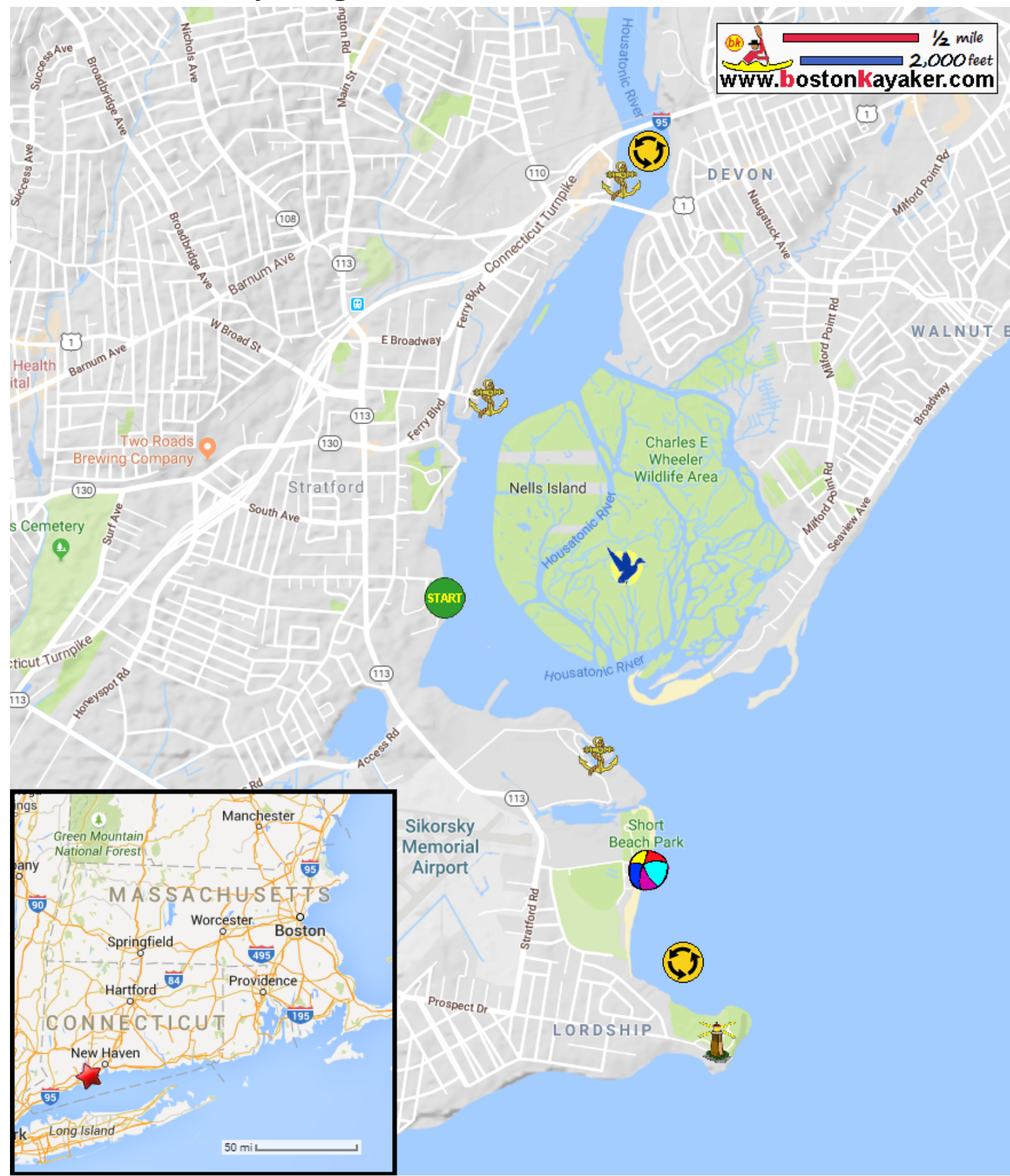










Kayaking on Housatonic River - in Stratford CT

1/2 mile
2,000 feet
www.bostonkayaker.com



-  Put in at Birdseye Street ramps in Stratford CT.
-  Paddle down on Housatonic River then up and return.
-  Estimated round trip distance = 8+ miles
-  Charles Wheeler Wildlife Area
-  Stratford Point Lighthouse
-  Best to start paddle 1 hour+ before high tide.
-  Short Beach Park
-  Marinas