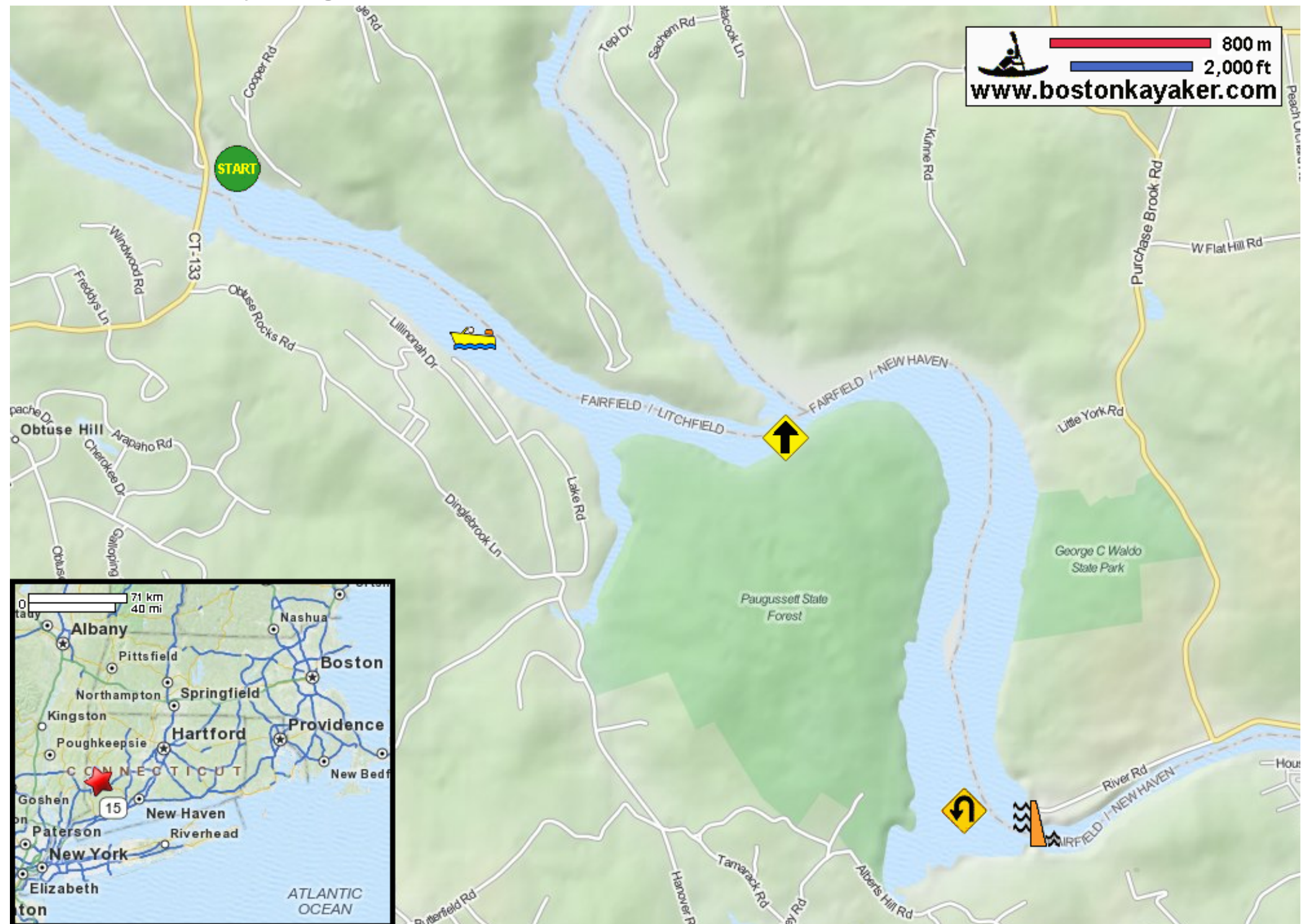


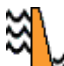



# Kayaking on Housatonic River and Lake Lillinonah - in Bridgewater CT

800 m  
2,000 ft  
[www.bostonkayaker.com](http://www.bostonkayaker.com)



-  Put in Route 133 bridge in Bridgewater CT.
-  Paddle south and return.
-  Optionally paddle into Shepaug River and return.
-  Estimated round trip distance = 8 miles
-  Shepaug Dam
-  River can be busy with powered boats.