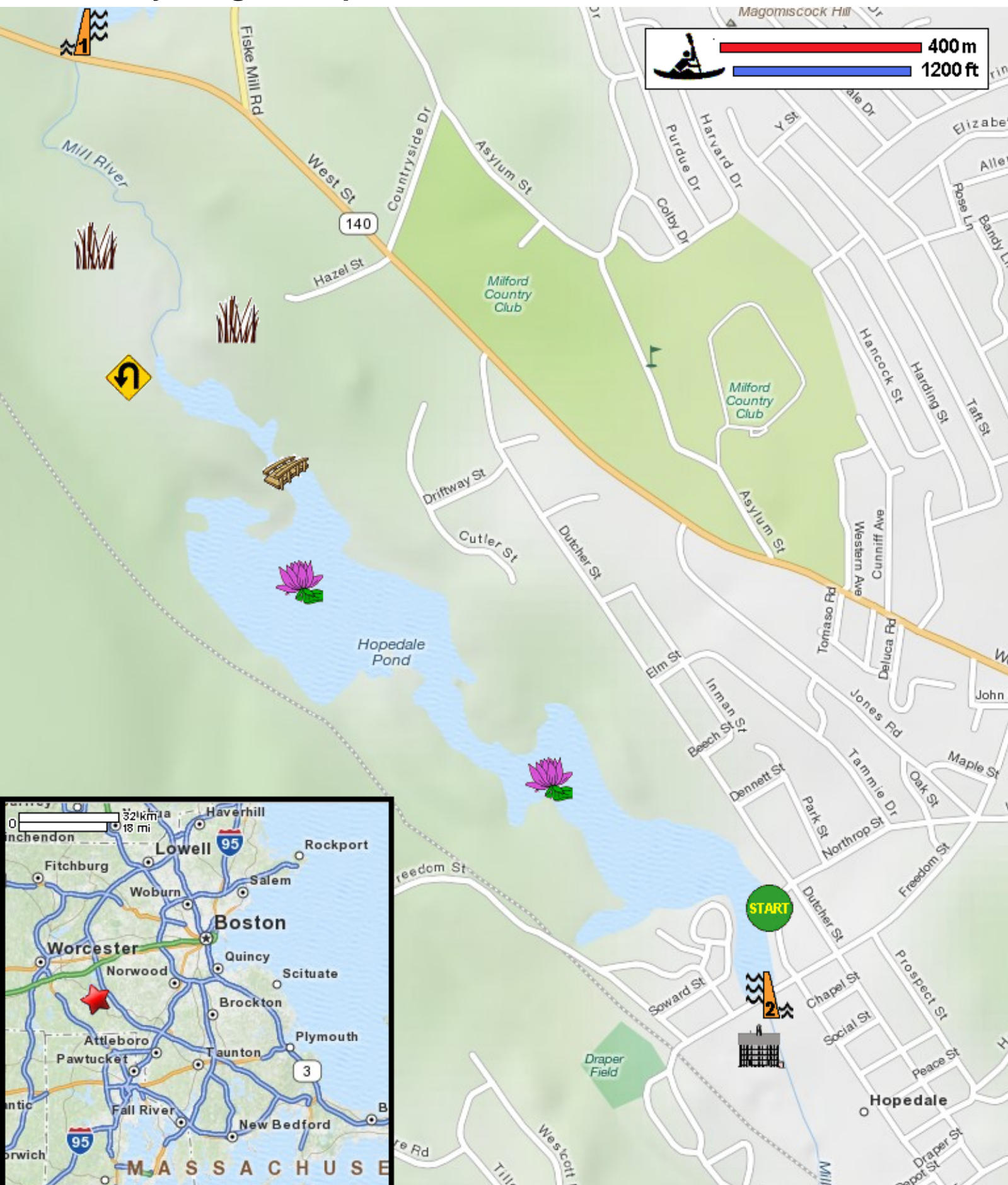











Kayaking on Hopedale Pond and Mill River - in Hopedale MA



-  Put in at Hopedale Street in Hopedale MA.
-  Paddle to north end of pond and return.
-  Paddle to north end of pond and return.
-  Estimated round trip distance = 2.5 miles
-  Mill Pond Dam
-  Northern half is full of aquatic vegetation July onwards.
-  Foot bridge
-  Historical Old Mill
-  Hopedale Pond Dam