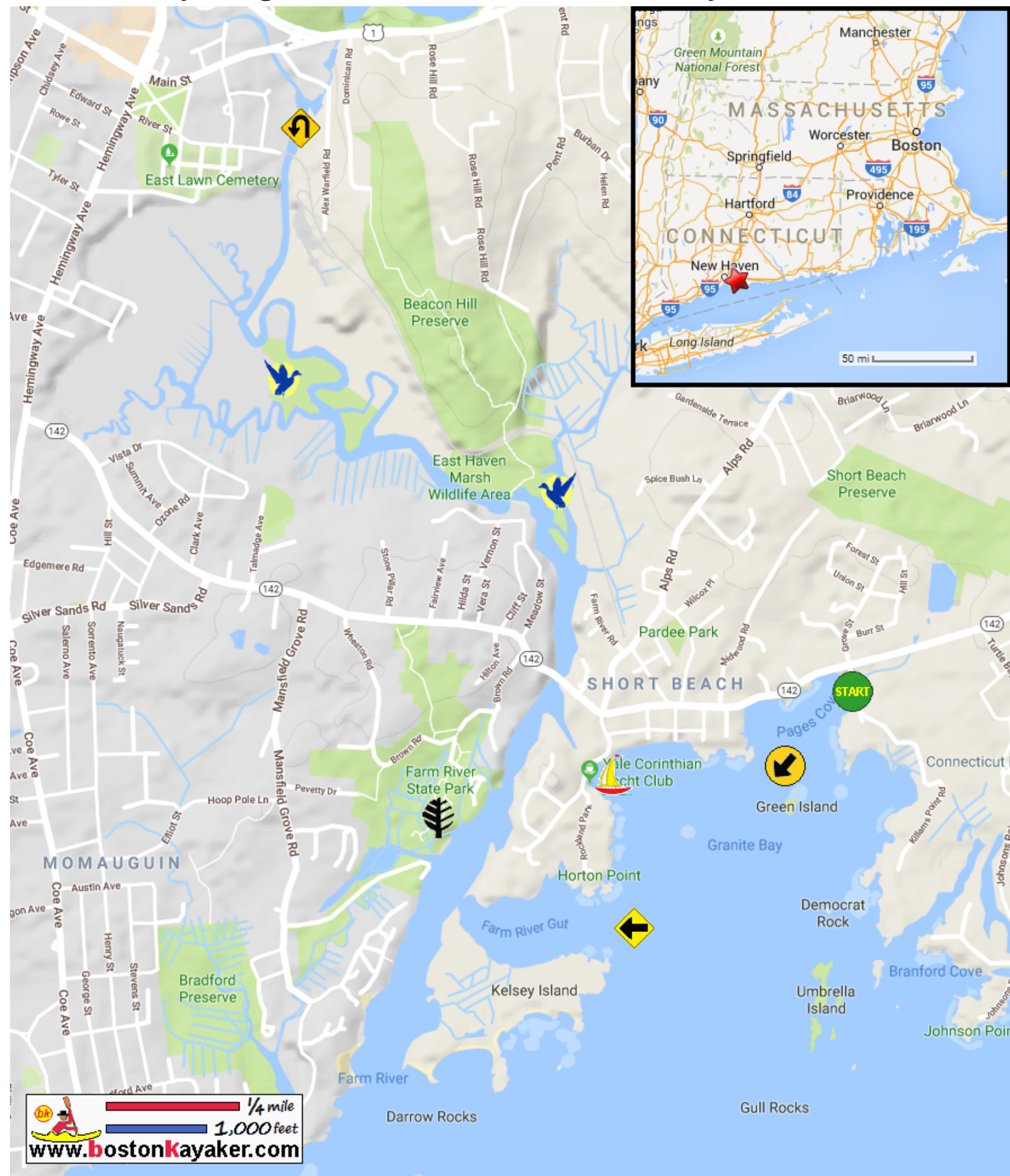










# Kayaking on Farm River and Granite Bay - in Branford CT




  
[www.bostonkayaker.com](http://www.bostonkayaker.com)

-  Put in at Killams Point Road roadside in Branford CT.
-  Paddle southwest to Granite Bay then west to Farm River.
-  Paddle up on Farm River and return.
-  Estimated round trip distance = 5 miles
-  East Haven Marsh Wildlife Area
-  Yale Corinthian Yacht Club
-  Farm River State Park
-  Best to start 1 hour+ before high tide.