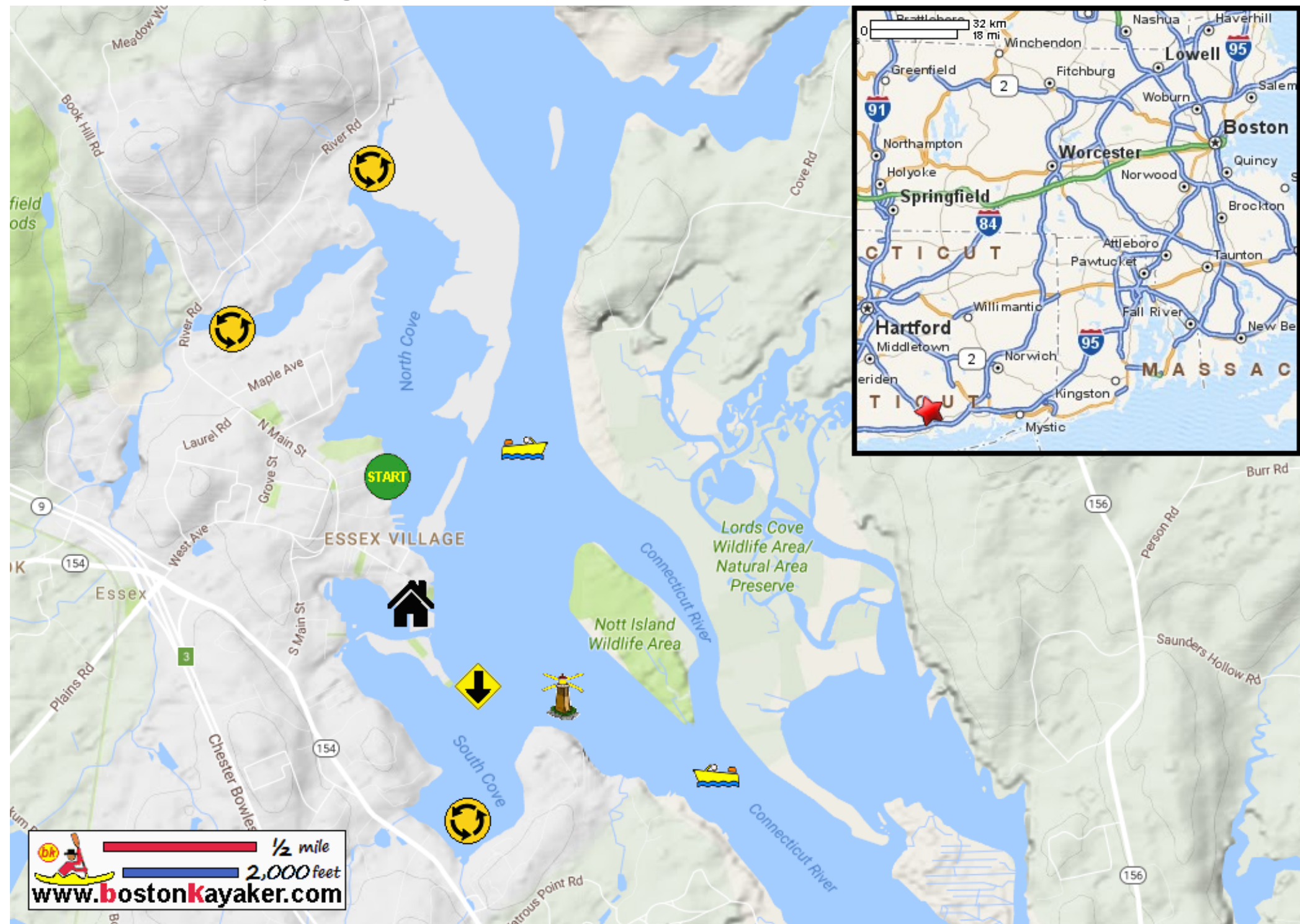








Kayaking on Essex Coves off the Connecticut River - in Essex CT



-  Put in at Teal Lane in Essex CT.
-  Paddle around the North and South Essex Coves and return.
-  Estimated round trip distance = 5+ mile
-  Connecticut River Museum
-  Essex Reef Lighthouse
-  Connecticut River marine traffic.