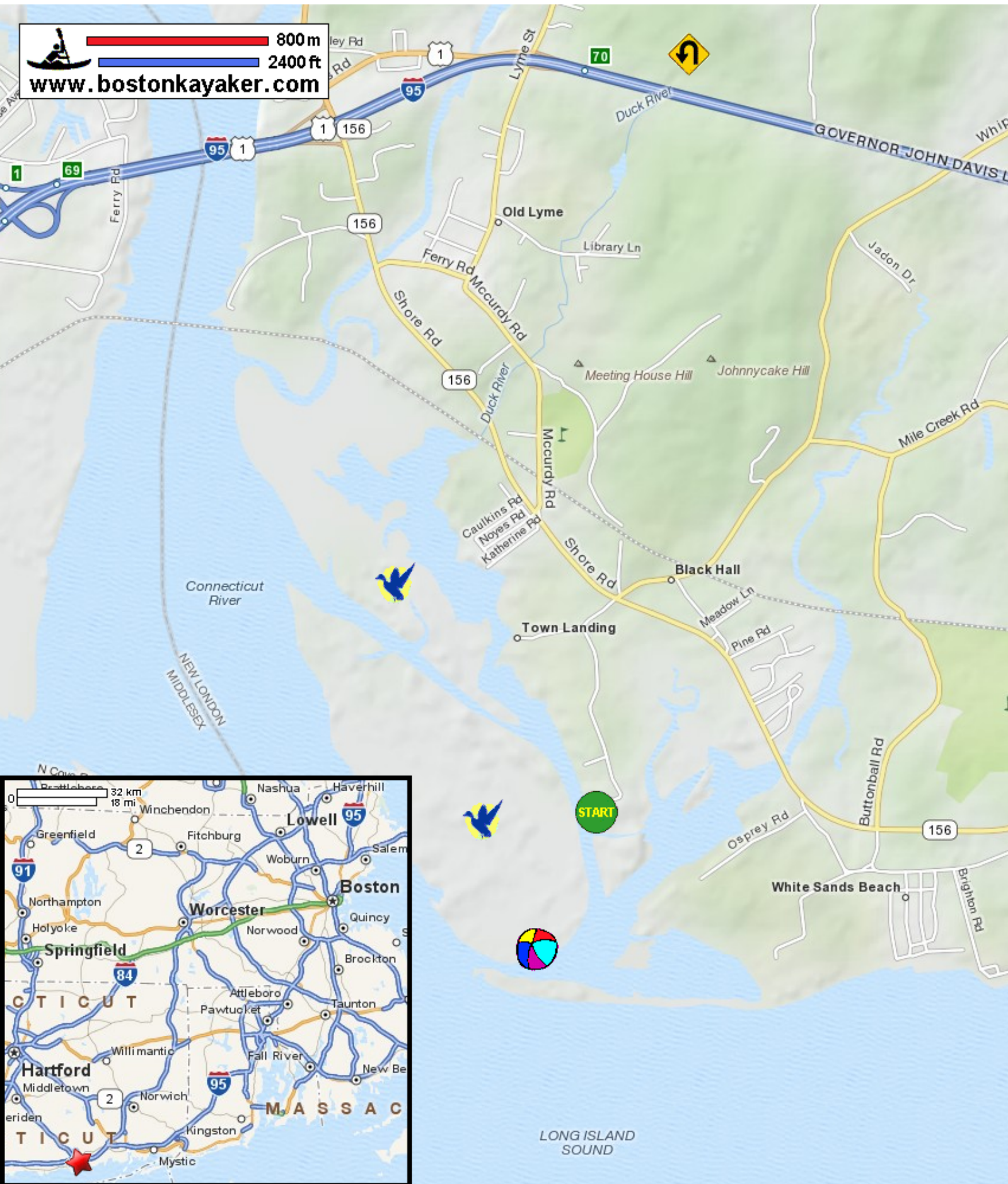








Kayaking on Duck River - in Old Lyme CT


800 m
2400 ft
www.bostonkayaker.com



-  Put in at Town Landing on Smith Neck Road in Old Lyme CT.
-  Paddle north to Duck River and return.
-  Estimated round trip distance = 5+ miles
-  Great Island Wildlife Area
-  Best to start trip 1 hour+ before high tide.
-  Poverty Island Beach