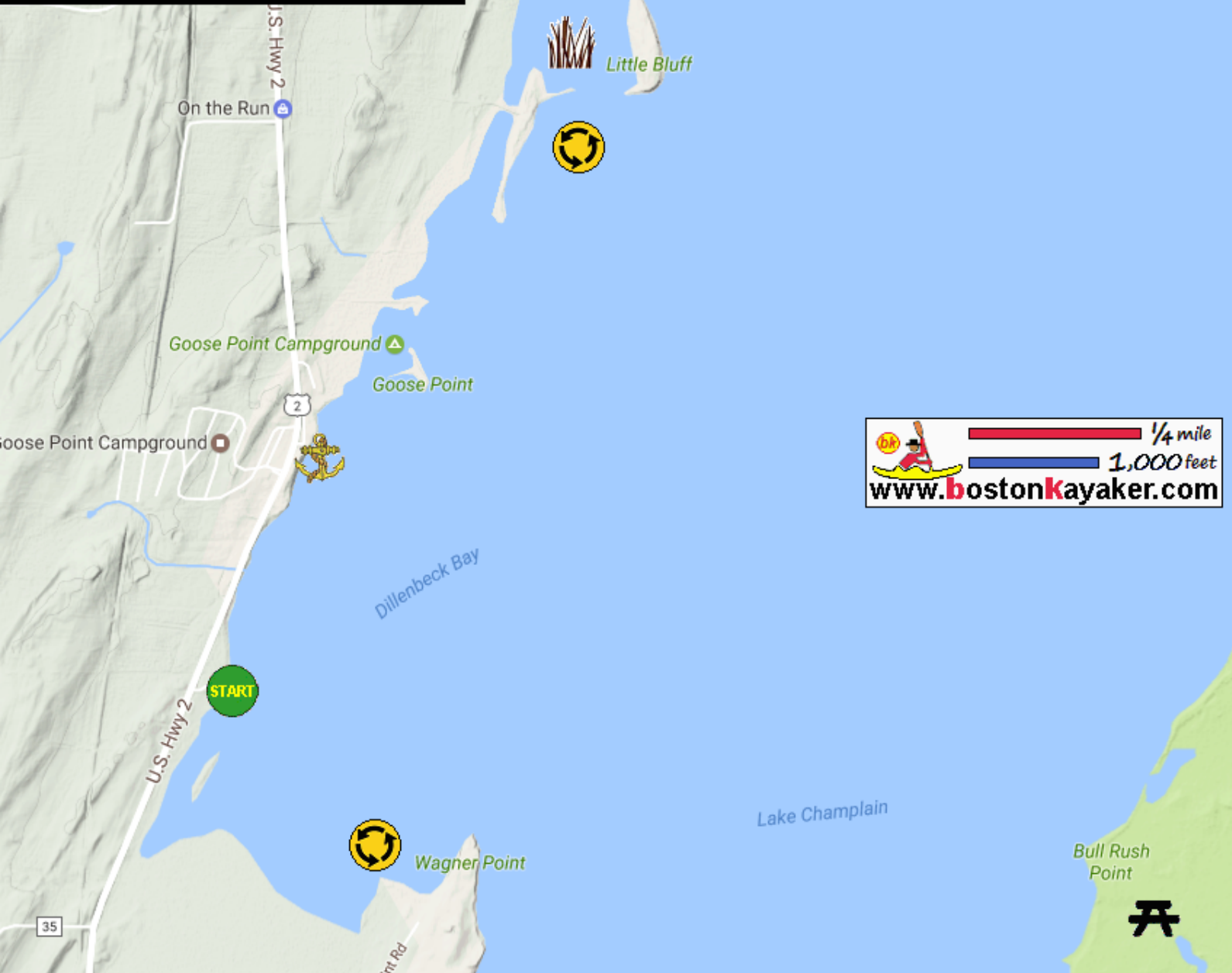
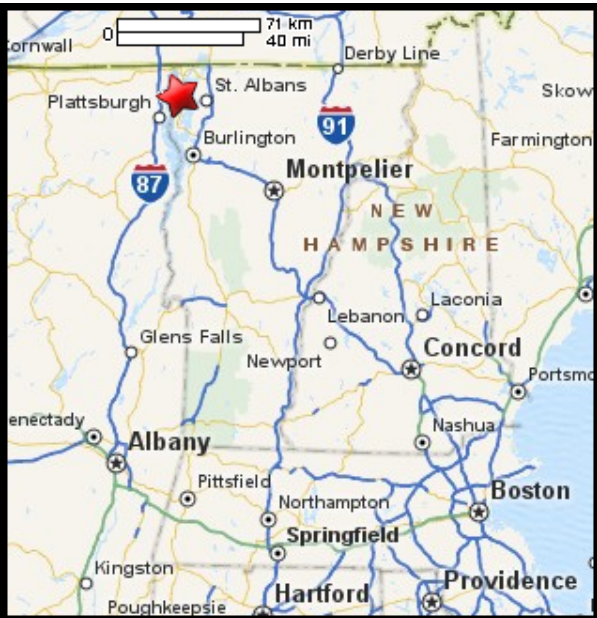








# Kayaking on Lake Champlain's Dillenbeck Bay - in Alburg VT




 1/4 mile  
 1,000 feet  
[www.bostonkayaker.com](http://www.bostonkayaker.com)

-  Put in at state ramp on Route 2 in Alburg VT.
-  Paddle around Dillenbeck Bay and return.
-  Estimated round trip distance = 4 miles
-  North Hero State Park
-  Marsh area best not to enter.
-  Marina