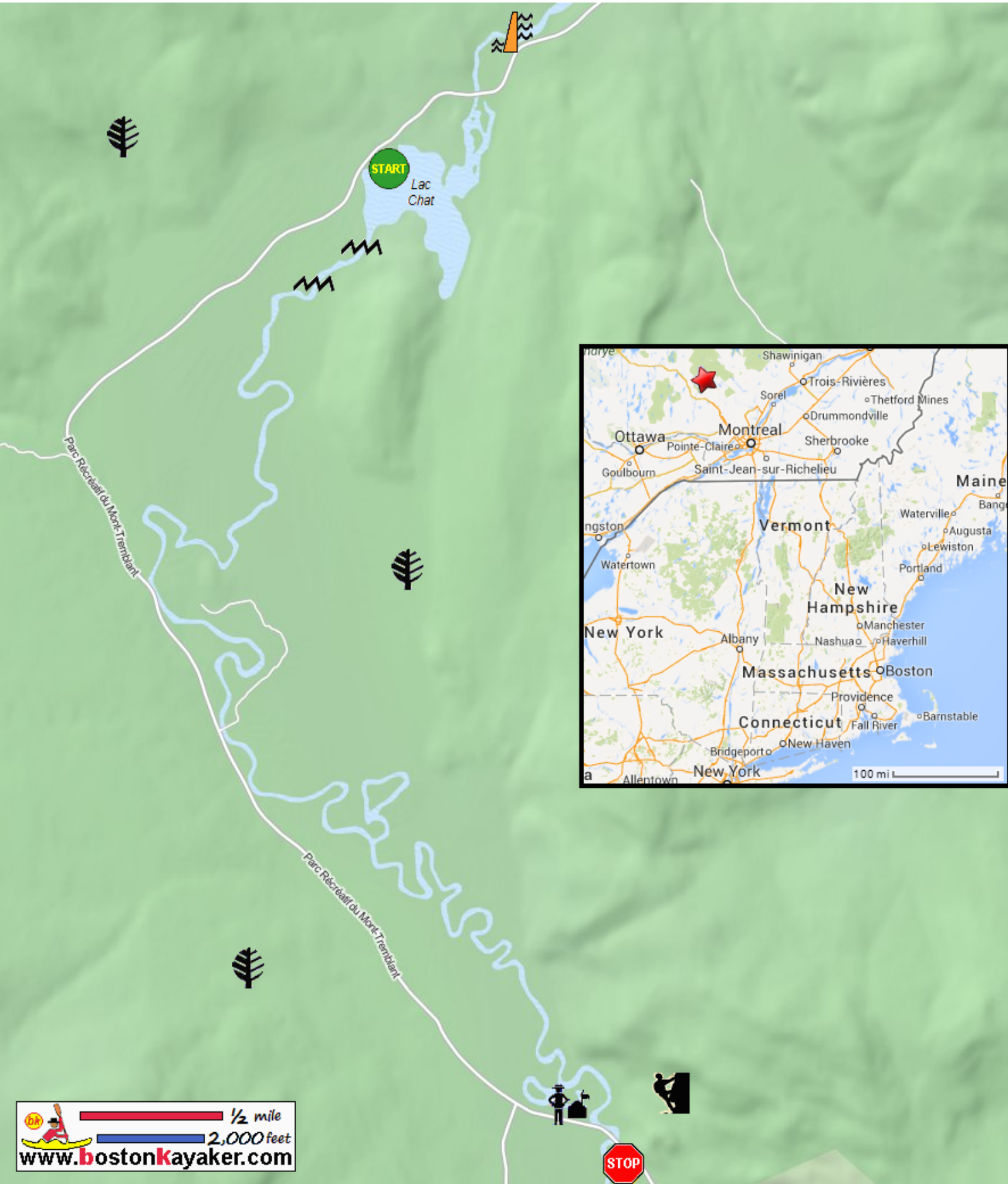










# Kayaking on Les Méandres du Diable - "Devil's Meanders" in Lac-Supérieur, Québec



-  Put in at Lac-aux-Atocas on Lac Chat at Route 1 in Lac-Supérieur QC.
-  Take out at the bridge before park entrance Welcome Center.
-  Estimated distance = 10 miles
-  Park entrance
-  Parc national du Mont-Tremblant
-  Via Ferrata rock climbing on La Vache Noire
-  Lac Monroe Dam
-  Class I-II rapids