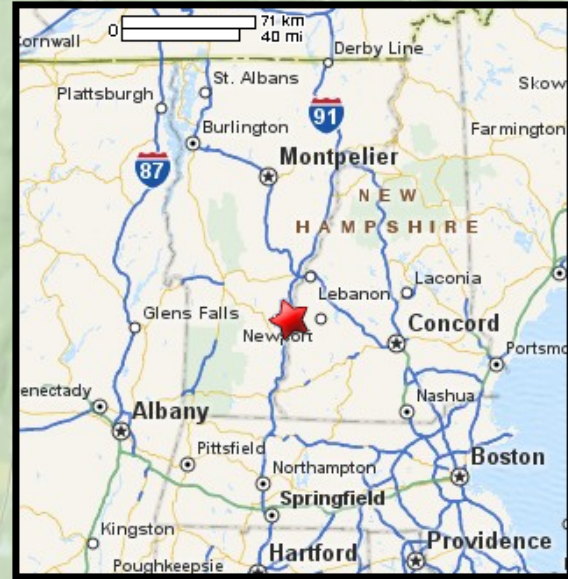
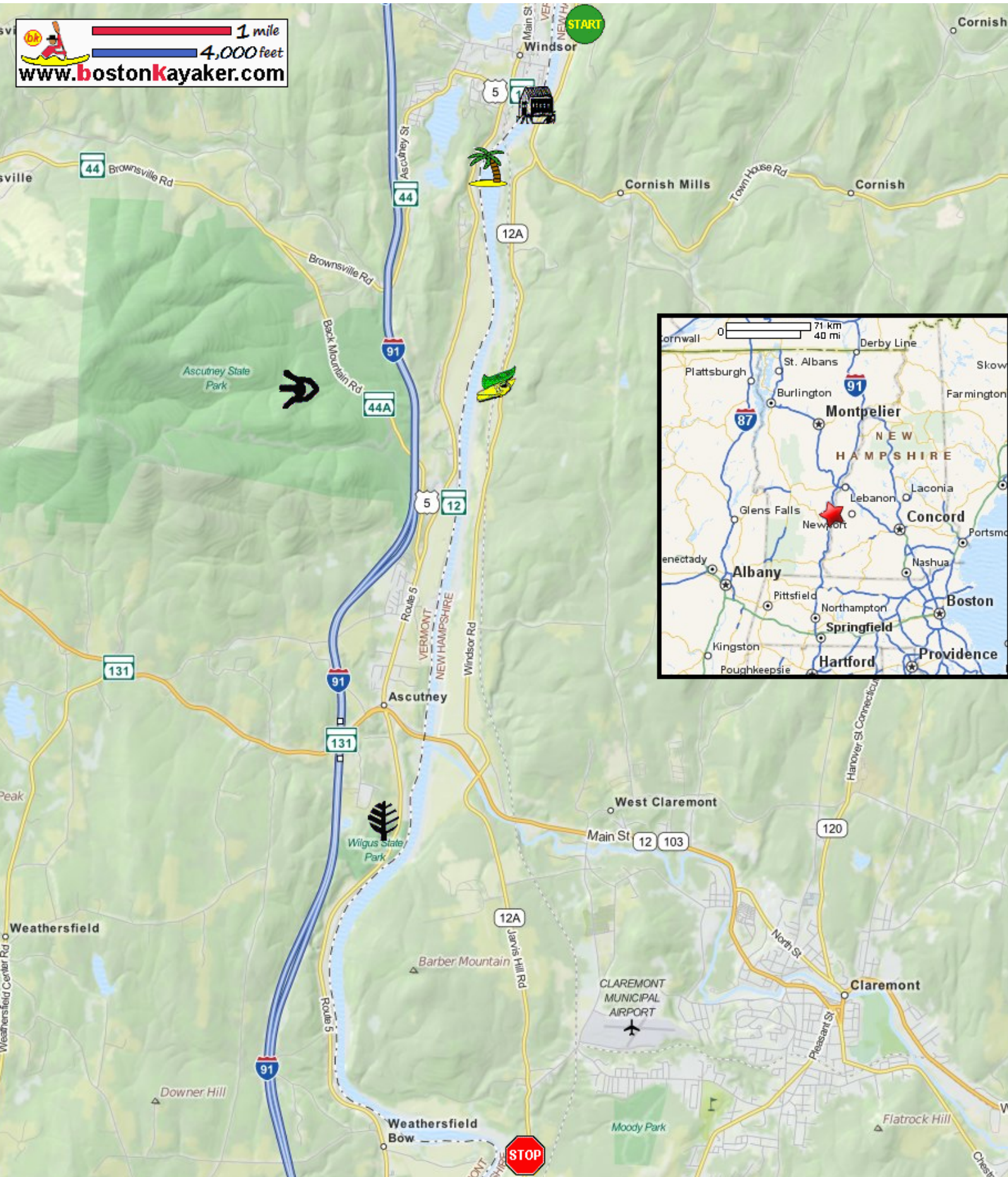










Kayaking on Connecticut River - from Cornish NH to Claremont NH




www.bostonkayaker.com



- | | | | |
|--|---|---|--|
|  Put in north of covered bridge on Route 12A in Cornish NH. |  Take out at Ashley Ferry landing on Ferry Road in Claremont NH. |  Estimated distance = 10 miles |  Cornish Covered Bridge |
|  Take either side when river forks on Chase Island. |  Mount Ascutney and Ascutney State Park |  North Star Canoe & kayak rentals |  Wilgus State Park |