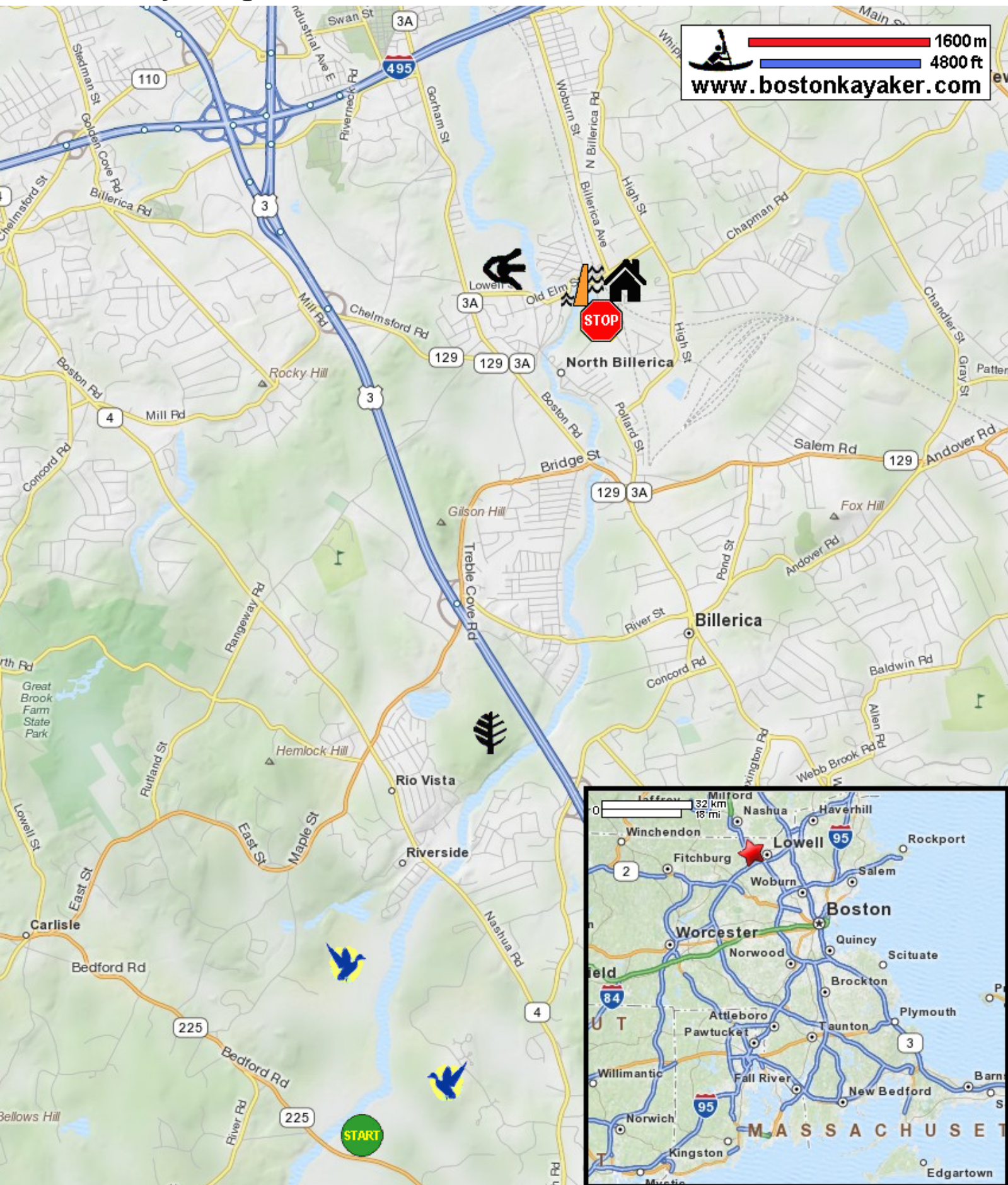










# Kayaking on Concord River - from Bedford MA to North Billerica MA



1600 m  
4800 ft  
[www.bostonkayaker.com](http://www.bostonkayaker.com)



- |   |  |   |   |  |                              |   |                        |
|---|--|---|---|--|------------------------------|---|------------------------|
|  | Put in at Carlisle Road in Bedford MA.       |  | Take out at Faulkner Street before dam in North Billerica MA. |  | Estimated distance = 7 miles |  | Middlesex Canal Museum |
|  | Great Meadows National Wildlife Refuge (NWR) |  | Ralph Hill Conservation Area                                  |  | Faulkner Mill dam / falls    |  | Middlesex Canal        |