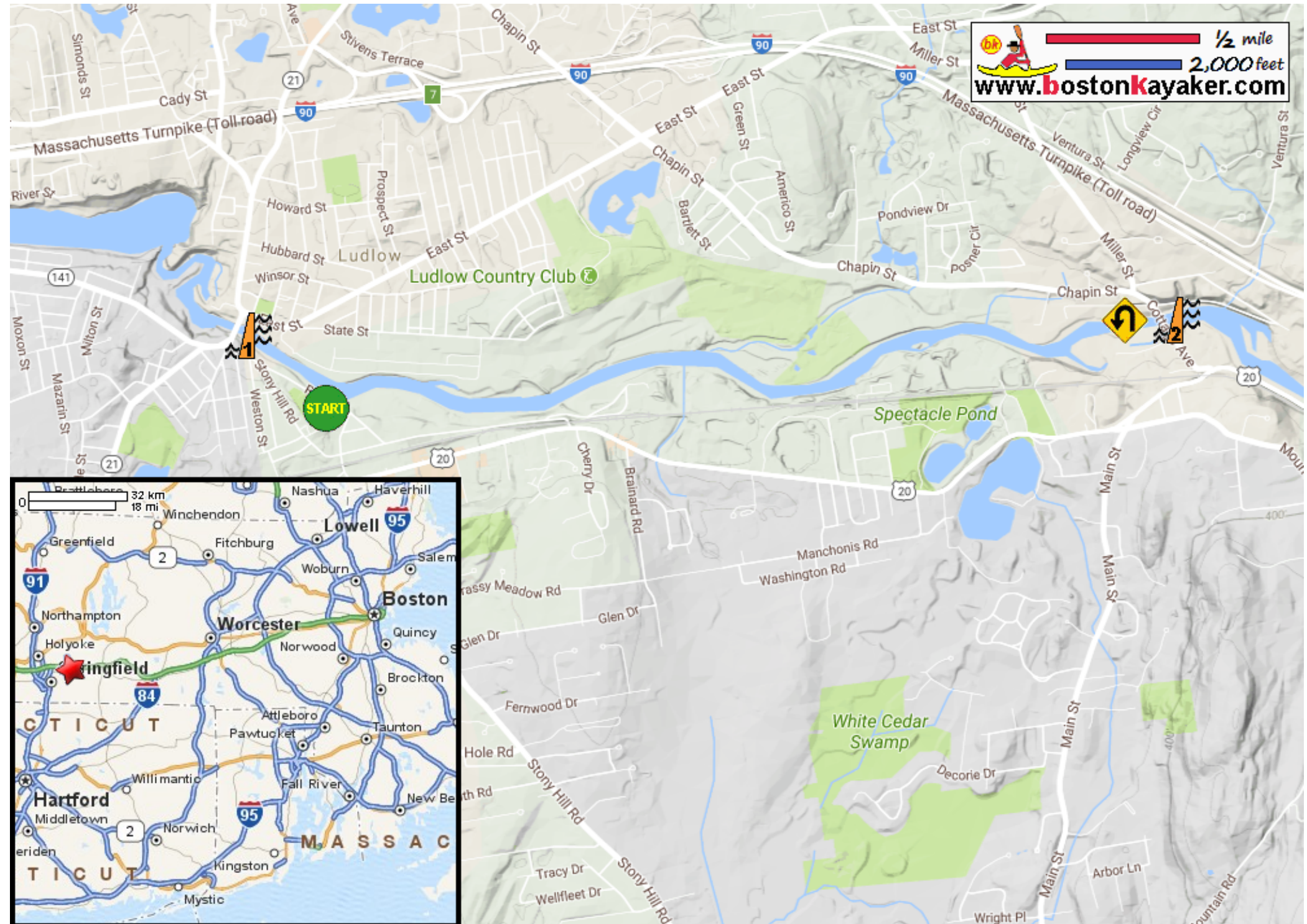


Kayaking on Chicopee River - in Wilbraham MA

1/2 mile
 2,000 feet
www.bostonkayaker.com



- Put in at River Road in Wilbraham MA.
- Paddle east up on Chicopee River to dam and return.
- Estimated round trip distance = 5.5 miles
- Putts Bridge Dam
- Collins Dam