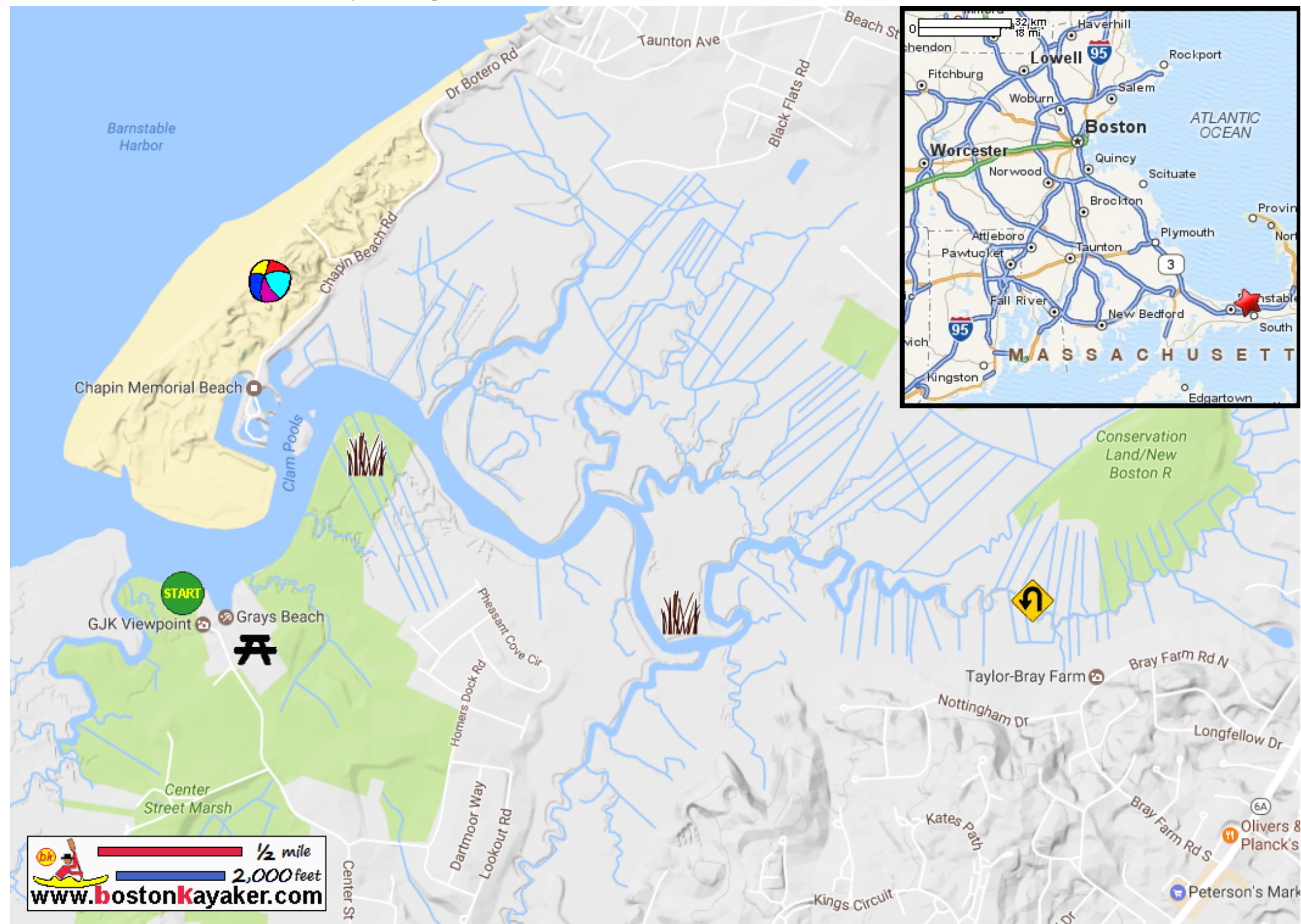


Kayaking on Chase Garden Creek - in Yarmouth Port MA



-  Put in at Center Street in Yarmouth Port MA.
-  Paddle into creek and return.
-  Estimated round trip distance = 4+ miles
-  Best to start 1+ hour before high tide.
-  Gray's Beach (Bass Hole) Rec Area
-  Salt Marsh
-  Chapin Beach