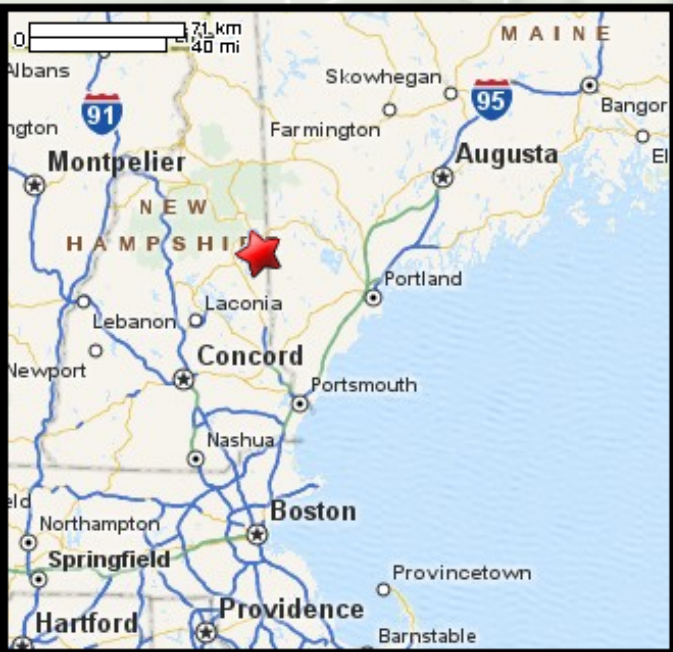
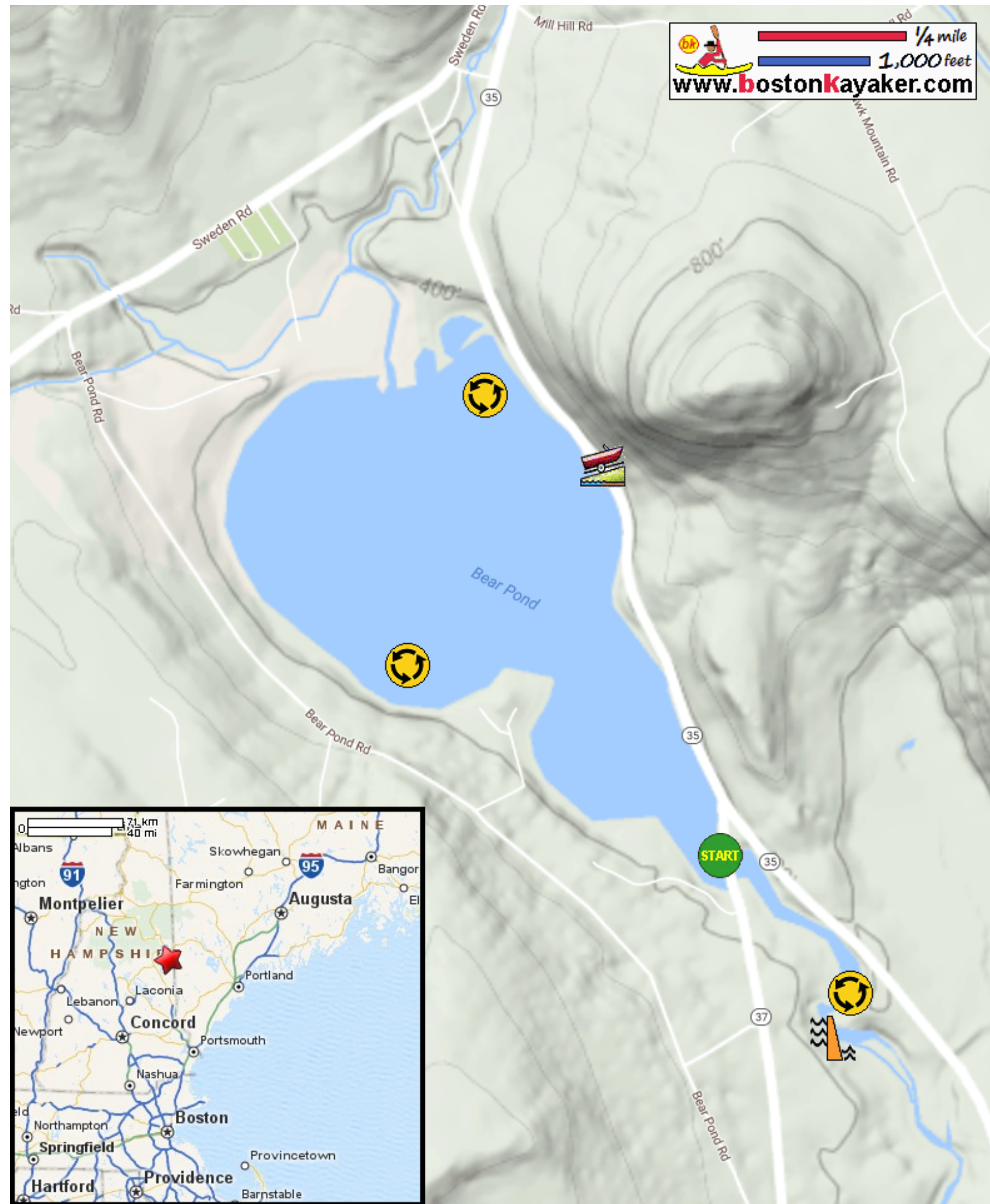


Kayaking on Bear Pond - in Waterford ME

1/4 mile
 1,000 feet
www.bostonkayaker.com



- Put in at Bear Pond Park on Route 37 in Waterford ME.
- Paddle around Bear Pond and return.
- Estimated round trip distance = 2.5 miles
- Route 35 dirt ramp access
- Bear Pond Dam