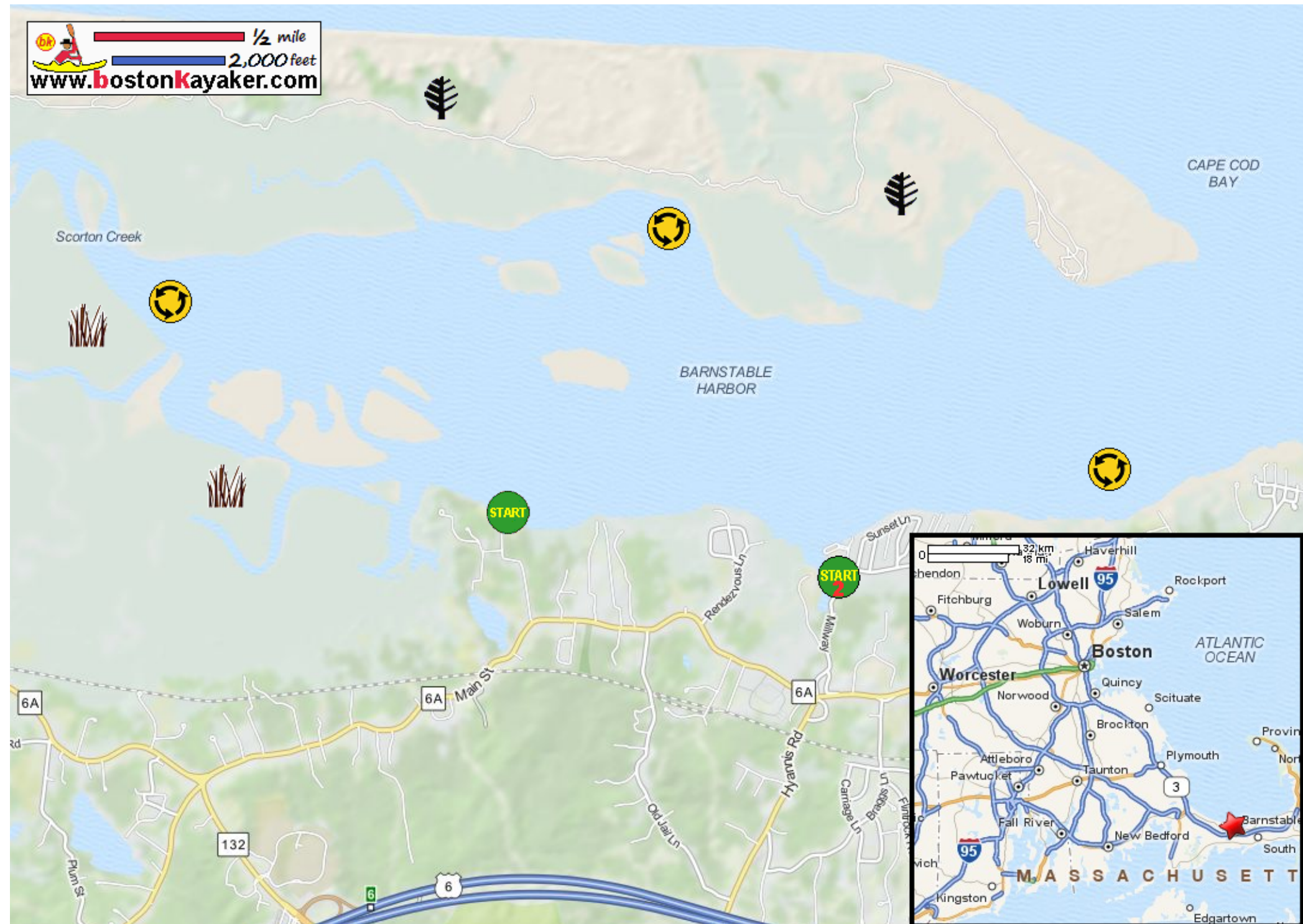


Kayaking on Barnstable Harbor - in Barnstable MA

www.bostonkayaker.com



- Put in at Scudder's Lane in Barnstable MA.
- Alternate put in spot at Milway Road.
- Paddle around Barnstable Harbor and return.
- Estimated round trip distance = 6 to 8 miles
- Sandy Neck Reservation
- Great Marsh