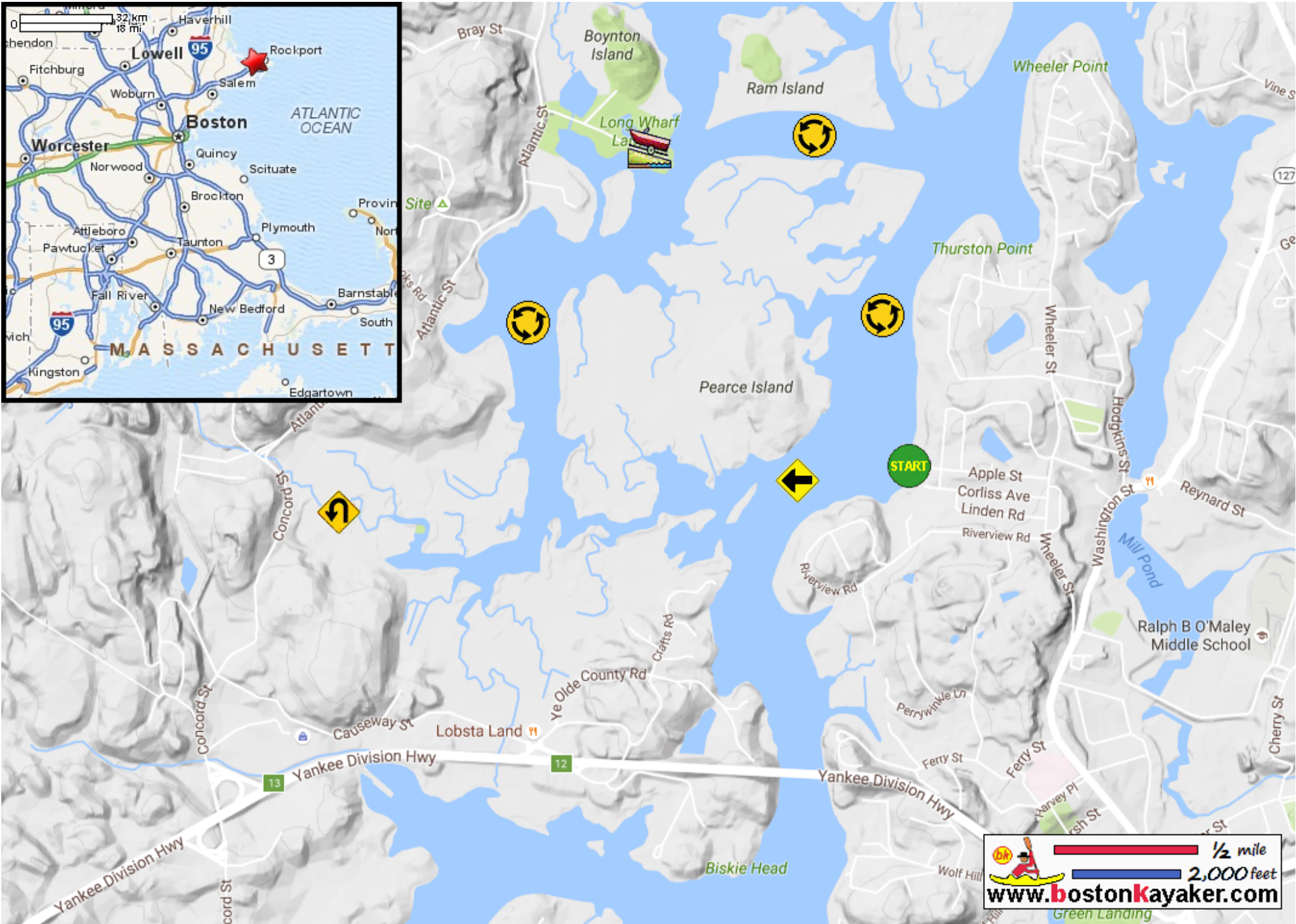








# Kayaking on Annisquam River from Corliss Landing - in Gloucester MA



-  Put in at Corliss Landing on Apple Street in Gloucester MA.
-  Paddle west to Jones River and return.
-  Paddle around Pearce Island and return.
-  Estimated round trip distance = 4+ miles
-  Best to start 1 hour+ before high tide.
-  Long Wharf Landing